

For Research Use Only

# RAP1B Monoclonal antibody

Catalog Number: 67174-1-Ig **1 Publications**



## Basic Information

<b>Catalog Number:</b> 67174-1-Ig	<b>GenBank Accession Number:</b> BC000176	<b>Purification Method:</b> Protein A purification
<b>Size:</b> 150ul , Concentration: 1900 ug/ml by 5908 Nanodrop and 1000 ug/ml by Bradford method using BSA as the standard;	<b>GeneID (NCBI):</b> 5908	<b>CloneNo.:</b> 2E7G11
<b>Source:</b> Mouse	<b>UNIPROT ID:</b> P61224	<b>Recommended Dilutions:</b> WB 1:2000-1:8000 IHC 1:50-1:200 IF/ICC 1:200-1:800
<b>Isotype:</b> IgG1	<b>Full Name:</b> RAP1B, member of RAS oncogene family	
<b>Immunogen Catalog Number:</b> AG29212	<b>Calculated MW:</b> 21 kDa	
	<b>Observed MW:</b> 21 kDa	

## Applications

<b>Tested Applications:</b> WB, IHC, IF/ICC, ELISA	<b>Positive Controls:</b>
<b>Cited Applications:</b> WB	<b>WB :</b> HeLa cells, HSC-T6 cells, NIH/3T3 cells, 4T1 cells, HEK-293 cells, HepG2 cells, Jurkat cells
<b>Species Specificity:</b> human, mouse, rat	<b>IHC :</b> human oesophagus cancer tissue,
<b>Cited Species:</b> human	<b>IF/ICC :</b> HeLa cells,
<b>Note-IHC: suggested antigen retrieval with TE buffer pH 9.0; (*) Alternatively, antigen retrieval may be performed with citrate buffer pH 6.0</b>	

## Notable Publications

Author	Pubmed ID	Journal	Application
Zhongji Liao	39853211	J Cell Sci	WB

## Storage

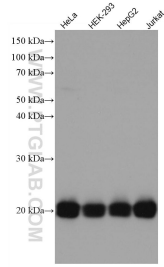
**Storage:**  
Store at -20°C. Stable for one year after shipment.  
**Storage Buffer:**  
PBS with 0.02% sodium azide and 50% glycerol, pH7.3  
**Aliquoting is unnecessary for -20°C storage**

\*\*\* 20ul sizes contain 0.1% BSA

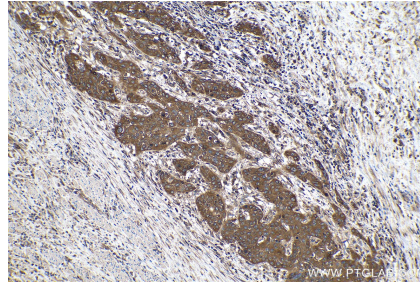
For technical support and original validation data for this product please contact:  
T: 1 (888) 4PTGLAB (1-888-478-4522) (toll free in USA), or 1(312) 455-8498 (outside USA)  
E: proteintech@ptglab.com  
W: ptglab.com

This product is exclusively available under Proteintech Group brand and is not available to purchase from any other manufacturer.

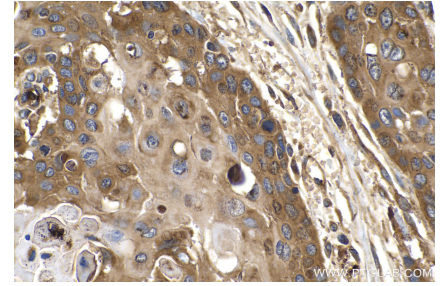
## Selected Validation Data



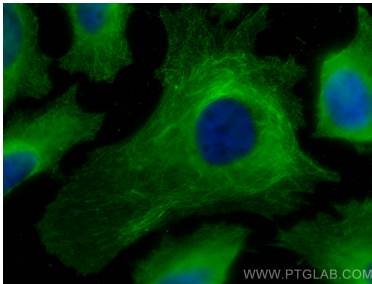
Various lysates were subjected to SDS PAGE followed by western blot with 67174-1-Ig (RAP1B antibody) at dilution of 1:5000 incubated at room temperature for 1.5 hours.



Immunohistochemical analysis of paraffin-embedded human oesophagus cancer tissue slide using 67174-1-Ig (RAP1B antibody) at dilution of 1:1 (under 10x lens). Heat mediated antigen retrieval with Tris-EDTA buffer (pH 9.0).



Immunohistochemical analysis of paraffin-embedded human oesophagus cancer tissue slide using 67174-1-Ig (RAP1B antibody) at dilution of 1:1 (under 40x lens). Heat mediated antigen retrieval with Tris-EDTA buffer (pH 9.0).



Immunofluorescent analysis of (-20°C Methanol) fixed HeLa cells using RAP1B antibody (67174-1-Ig, Clone: 2E7G11) at dilution of 1:400 and CoraLite®488-Conjugated AffiniPure Goat Anti-Mouse IgG(H+L).