

For Research Use Only

CUL2 Monoclonal antibody

Catalog Number: 67175-1-Ig

Featured Product

1 Publications



Basic Information

Catalog Number:

67175-1-Ig

Size:

150ul, Concentration: 2300 ug/ml by Nanodrop and 1000 ug/ml by Bradford method using BSA as the standard;

Source:

Mouse

Isotype:

IgG1

Immunogen Catalog Number:

AG28654

GenBank Accession Number:

BC009591

GeneID (NCBI):

8453

UNIPROT ID:

Q13617

Full Name:

cullin 2

Calculated MW:

87 kDa

Observed MW:

85-90 kDa

Purification Method:

Protein G purification

CloneNo.:

1A6G9

Recommended Dilutions:

WB 1:5000-1:50000

IHC 1:250-1:1000

IF/ICC 1:200-1:800

Applications

Tested Applications:

WB, IHC, IF/ICC, ELISA

Cited Applications:

WB, IF, IP

Species Specificity:

human, rat

Cited Species:

human

Note-IHC: suggested antigen retrieval with TE buffer pH 9.0; (*) Alternatively, antigen retrieval may be performed with citrate buffer pH 6.0

Positive Controls:

WB : A431 cells, HEK-293 cells, HeLa cells, HSC-T6 cells, MCF-7 cells, PC-3 cells, Raji cells, SW 1990 cells, TF-1 cells, K-562 cells

IHC : human breast cancer tissue, human prostate cancer tissue

IF/ICC : HeLa cells,

Background Information

The cullin family proteins are scaffold proteins for the Ring finger type E3 ligases, participating in the proteolysis through the ubiquitin-proteasome pathway. Humans express seven cullin proteins: CUL1-3, CUL4A, CUL4B, CUL5, and CUL7. Each cullin protein can form an E3 ligase similar to the prototype Ring-type E3 ligase Skp1-CUL1-F-box complex. The Cullin-RING-finger type E3 ligases are important regulators in early embryonic development, as highlighted by genetic studies demonstrating that knock-out of CUL1, CUL3, or CUL4A in mice results in early embryonic lethality.

Notable Publications

Author	Pubmed ID	Journal	Application
Tiantian Wang	38978293	FEBS J	WB,IP,IF

Storage

Storage:

Store at -20°C. Stable for one year after shipment.

Storage Buffer:

PBS with 0.02% sodium azide and 50% glycerol, pH7.3

Aliquoting is unnecessary for -20°C storage

*** 20ul sizes contain 0.1% BSA

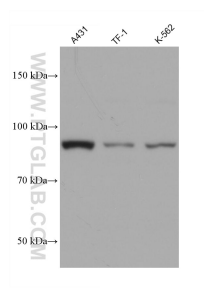
For technical support and original validation data for this product please contact:

T: 1 (888) 4PTGLAB (1-888-478-4522) (toll free in USA), or 1(312) 455-8498 (outside USA)

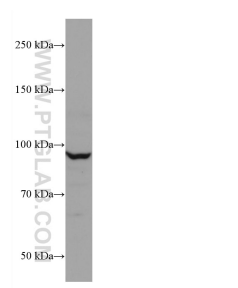
E: proteintech@ptglab.com
W: ptglab.com

This product is exclusively available under Proteintech Group brand and is not available to purchase from any other manufacturer.

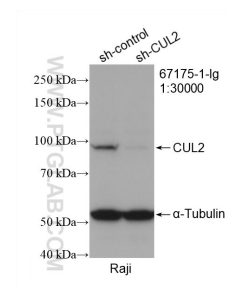
Selected Validation Data



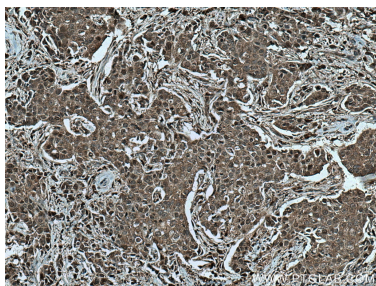
Various lysates were subjected to SDS PAGE followed by western blot with 67175-1-Ig (CUL2 antibody) at dilution of 1:18000 incubated at room temperature for 1.5 hours.



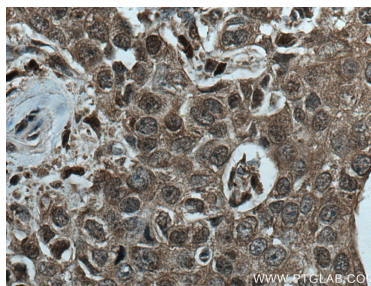
MCF-7 cells were subjected to SDS PAGE followed by western blot with 67175-1-Ig (CUL2 antibody) at dilution of 1:10000 incubated at room temperature for 1.5 hours.



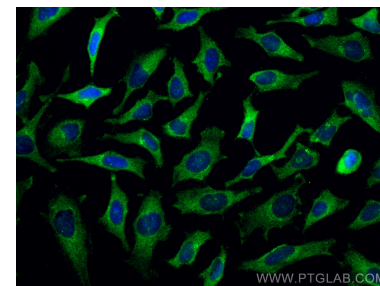
WB result of CUL2 antibody (67175-1-Ig; 1:30000; incubated at room temperature for 1.5 hours) with sh-Control and sh-CUL2 transfected Raji cells.



Immunohistochemical analysis of paraffin-embedded human breast cancer tissue slide using 67175-1-Ig (CUL2 antibody) at dilution of 1:500 (under 10x lens). Heat mediated antigen retrieval with Tris-EDTA buffer (pH 9.0).



Immunohistochemical analysis of paraffin-embedded human breast cancer tissue slide using 67175-1-Ig (CUL2 antibody) at dilution of 1:500 (under 40x lens). Heat mediated antigen retrieval with Tris-EDTA buffer (pH 9.0).



Immunofluorescent analysis of (-20°C Methanol) fixed HeLa cells using CUL2 antibody (67175-1-Ig, Clone: 1A6G9) at dilution of 1:400 and CoraLite®488-Conjugated AffiniPure Goat Anti-Mouse IgG(H+L).