

For Research Use Only

CUL2 Monoclonal antibody, PBS Only



Catalog Number: 67175-1-PBS

Featured Product

Basic Information

Catalog Number:

67175-1-PBS

Size:

100ug, Concentration: 1 mg/ml by Nanodrop;

Source:

Mouse

Isotype:

IgG1

Immunogen Catalog Number:

AG28654

GenBank Accession Number:

BC009591

GeneID (NCBI):

8453

UNIPROT ID:

Q13617

Full Name:

cullin 2

Calculated MW:

87 kDa

Observed MW:

85-90 kDa

Purification Method:

Protein A purification

CloneNo.:

1A6G9

Applications

Tested Applications:

WB, IF, IHC, ELISA

Species Specificity:

Human, Rat

Background Information

The cullin family proteins are scaffold proteins for the Ring finger type E3 ligases, participating in the proteolysis through the ubiquitin-proteasome pathway. Humans express seven cullin proteins: CUL1-3, CUL4A, CUL4B, CUL5, and CUL7. Each cullin protein can form an E3 ligase similar to the prototype Ring-type E3 ligase Skp1-CUL1-F-box complex. The Cullin-RING-finger type E3 ligases are important regulators in early embryonic development, as highlighted by genetic studies demonstrating that knock-out of CUL1, CUL3, or CUL4A in mice results in early embryonic lethality.

Storage

Storage:

Store at -80°C.

Storage Buffer:

PBS only

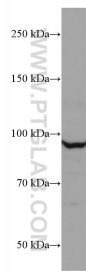
For technical support and original validation data for this product please contact:

T: 1 (888) 4PTGLAB (1-888-478-4522) (toll free in USA), or 1(312) 455-8498 (outside USA)

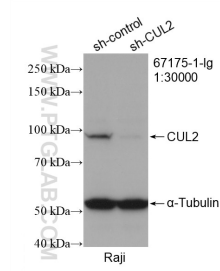
E: proteintech@ptglab.com
W: ptglab.com

This product is exclusively available under Proteintech Group brand and is not available to purchase from any other manufacturer.

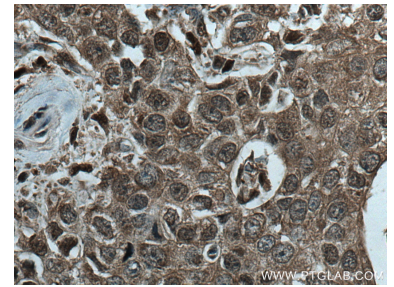
Selected Validation Data



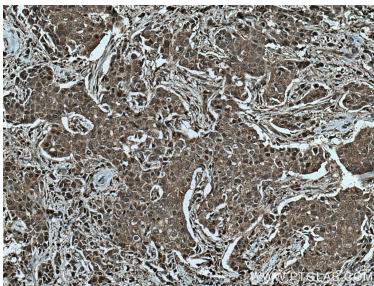
MCF-7 cells were subjected to SDS PAGE followed by western blot with 67175-1-Ig (CUL2 antibody) at dilution of 1:10000 incubated at room temperature for 1.5 hours. This data was developed using the same antibody clone with 67175-1-PBS in a different storage buffer formulation.



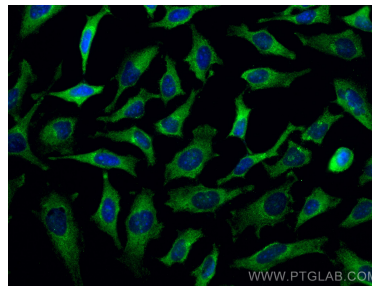
WB result of CUL2 antibody (67175-1-Ig; 1:30000; incubated at room temperature for 1.5 hours) with sh-Control and sh-CUL2 transfected Raji cells. This data was developed using the same antibody clone with 67175-1-PBS in a different storage buffer formulation.



Immunohistochemical analysis of paraffin-embedded human breast cancer tissue slide using 67175-1-Ig (CUL2 antibody) at dilution of 1:500 (under 40x lens). Heat mediated antigen retrieval with Tris-EDTA buffer (pH 9.0). This data was developed using the same antibody clone with 67175-1-PBS in a different storage buffer formulation.



Immunohistochemical analysis of paraffin-embedded human breast cancer tissue slide using 67175-1-Ig (CUL2 antibody) at dilution of 1:500 (under 10x lens). Heat mediated antigen retrieval with Tris-EDTA buffer (pH 9.0). This data was developed using the same antibody clone with 67175-1-PBS in a different storage buffer formulation.



Immunofluorescent analysis of (-20°C Methanol) fixed HeLa cells using CUL2 antibody (67175-1-Ig, Clone: 1A6G9) at dilution of 1:400 and CoraLite®488-Conjugated AffiniPure Goat Anti-Mouse IgG(H+L). This data was developed using the same antibody clone with 67175-1-PBS in a different storage buffer formulation.