

For Research Use Only

ECD Monoclonal antibody

Catalog Number: 67179-1-Ig



Basic Information

| | | |
|--|--|--|
| Catalog Number: 67179-1-Ig | GenBank Accession Number: BC000721 | Purification Method: Protein G purification |
| Size: 150ul , Concentration: 800 µg/ml by Nanodrop and 500 µg/ml by Bradford method using BSA as the standard; | GeneID (NCBI): 11319 | CloneNo.: 1D5E8 |
| Source: Mouse | Full Name: ecdysoneless homolog (Drosophila) | Recommended Dilutions: WB 1:20000-1:100000 IHC 1:500-1:2000 |
| Isotype: IgG1 | Calculated MW: 73 kDa | |
| Immunogen Catalog Number: AG28674 | Observed MW: 70-73 kDa | |

Applications

Tested Applications:

IHC, WB, ELISA

Species Specificity:

Human, mouse, rat

Note-IHC: suggested antigen retrieval with TE buffer pH 9.0; (*) Alternatively, antigen retrieval may be performed with citrate buffer pH 6.0

Positive Controls:

WB : HeLa cells, NIH/3T3 cells, HSC-T6 cells, Jurkat cells, JAR cells, NCCIT cells, HEK-293 cells

IHC : human renal cell carcinoma tissue, human stomach cancer tissue, mouse bladder tissue, rat colon tissue, rat bladder tissue

Background Information

Storage

Storage:

Store at -20°C. Stable for one year after shipment.

Storage Buffer:

PBS with 0.02% sodium azide and 50% glycerol pH 7.3.

Aliquoting is unnecessary for -20°C storage

*** 20ul sizes contain 0.1% BSA

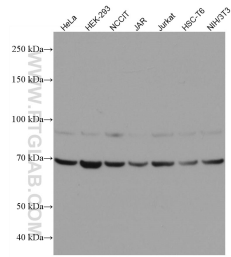
For technical support and original validation data for this product please contact:

T: 1 (888) 4PTGLAB (1-888-478-4522) (toll free in USA), or 1(312) 455-8498 (outside USA)

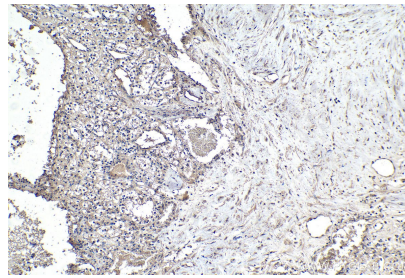
E: proteintech@ptglab.com
W: ptglab.com

This product is exclusively available under Proteintech Group brand and is not available to purchase from any other manufacturer.

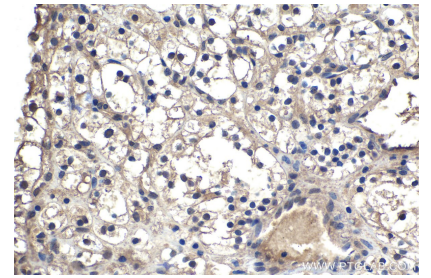
Selected Validation Data



Various lysates were subjected to SDS PAGE followed by western blot with 67179-1-Ig (ECD antibody) at dilution of 1:100000 incubated at room temperature for 1.5 hours.



Immunohistochemical analysis of paraffin-embedded human renal cell carcinoma tissue slide using 67179-1-Ig (ECD antibody) at dilution of 1:1000 (under 10x lens). Heat mediated antigen retrieval with Tris-EDTA buffer (pH 9.0).



Immunohistochemical analysis of paraffin-embedded human renal cell carcinoma tissue slide using 67179-1-Ig (ECD antibody) at dilution of 1:1000 (under 40x lens). Heat mediated antigen retrieval with Tris-EDTA buffer (pH 9.0).