

For Research Use Only

Cytohesin 2 Monoclonal antibody

Catalog Number: 67185-1-Ig

Featured Product

2 Publications



Basic Information

Catalog Number: 67185-1-Ig	GenBank Accession Number: BC004361	Purification Method: Protein A purification
Size: 150ul , Concentration: 1000 ug/ml by Bradford method using BSA as the standard;	GeneID (NCBI): 9266	CloneNo.: 3A7A1
Source: Mouse	UNIPROT ID: Q99418	Recommended Dilutions: WB 1:5000-1:10000 IHC 1:500-1:2000 IF/ICC 1:50-1:500
Isotype: IgG2a	Full Name: cytohesin 2	
Immunogen Catalog Number: AG21279	Calculated MW: 47 kDa	
	Observed MW: 47 kDa	

Applications

Tested Applications:
WB, IHC, IF/ICC, ELISA

Cited Applications:
WB, IF

Species Specificity:
Human, mouse, rat

Cited Species:
human, mouse

Note-IHC: suggested antigen retrieval with TE buffer pH 9.0; (*) Alternatively, antigen retrieval may be performed with citrate buffer pH 6.0

Positive Controls:

WB : HepG2 cells, 4T1 cells, NIH/3T3 cells, PC-12 cells, HSC-T6 cells, A549 cells, MCF-7 cells, HEK-293 cells, HeLa cells

IHC : human liver cancer tissue, human colon cancer tissue

IF/ICC : HeLa cells,

Background Information

Pleckstrin homology, Sec7 and coiled/coil domains 2 (PSCD2) is a member of the PSCD family. Members of this family have identical structural organization that consists of an N-terminal coiled-coil motif, a central Sec7 domain, and a C-terminal pleckstrin homology (PH) domain. The coiled-coil motif is involved in homodimerization, the Sec7 domain contains guanine-nucleotide exchange protein (GEP) activity, and the PH domain interacts with phospholipids and is responsible for association of PSCDs with membranes. Members of this family appear to mediate the regulation of protein sorting and membrane trafficking. PSCD2 exhibits GEP activity in vitro with small G proteins ARF1, ARF3, and ARF6.

Notable Publications

Author	Pubmed ID	Journal	Application
Akikazu Harada	34590580	Elife	IF
Yimin Dong	36252772	Pharmacol Res	WB

Storage

Storage:

Store at -20°C. Stable for one year after shipment.

Storage Buffer:

PBS with 0.02% sodium azide and 50% glycerol pH 7.3.

Aliquoting is unnecessary for -20°C storage

*** 20ul sizes contain 0.1% BSA

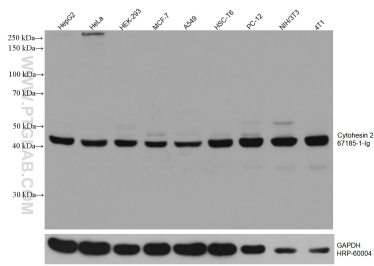
For technical support and original validation data for this product please contact:

T: 1 (888) 4PTGLAB (1-888-478-4522) (toll free in USA), or 1(312) 455-8498 (outside USA)

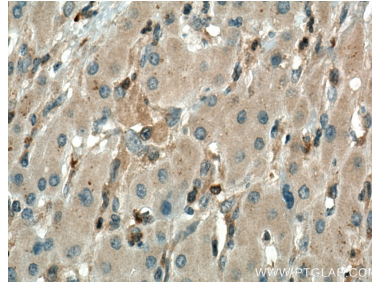
E: proteintech@ptglab.com
W: ptglab.com

This product is exclusively available under Proteintech Group brand and is not available to purchase from any other manufacturer.

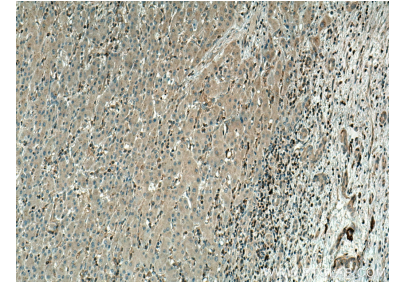
Selected Validation Data



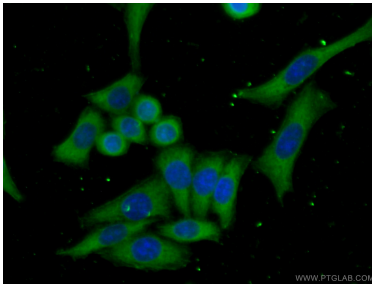
Various lysates were subjected to SDS PAGE followed by western blot with 67185-1-Ig (CYTH2 antibody) at dilution of 1:10000 incubated at room temperature for 1.5 hours. The membrane was stripped and reblotted with HRP-conjugated GAPDH Monoclonal antibody (HRP-60004) as loading control.



Immunohistochemical analysis of paraffin-embedded human liver cancer tissue slide using 67185-1-Ig (Cytohesin 2 antibody) at dilution of 1:1000 (under 40x lens). Heat mediated antigen retrieval with Tris-EDTA buffer (pH 9.0).



Immunohistochemical analysis of paraffin-embedded human liver cancer tissue slide using 67185-1-Ig (Cytohesin 2 antibody) at dilution of 1:1000 (under 10x lens). Heat mediated antigen retrieval with Tris-EDTA buffer (pH 9.0).



Immunofluorescent analysis of (-20°C Ethanol) fixed HeLa cells using 67185-1-Ig (Cytohesin 2 antibody) at dilution of 1:100 and CoraLite488-Conjugated AffiniPure Goat Anti-Mouse IgG(H+L).