

For Research Use Only

ENO1 Monoclonal antibody

Catalog Number: 67187-1-Ig



Basic Information

Catalog Number:

67187-1-Ig

Size:

150ul, Concentration: 200 ug/ml by Bradford method using BSA as the standard;

Source:

Mouse

Isotype:

IgM

Immunogen Catalog Number:

AG17518

GenBank Accession Number:

BC015641

GeneID (NCBI):

2023

ENSEMBL Gene ID:

ENSG00000074800

UNIPROT ID:

P06733

Full Name:

enolase 1, (alpha)

Calculated MW:

47 kDa

Observed MW:

47 kDa

Purification Method:

Thiophilic affinity chromatograph

CloneNo.:

1D6E8

Recommended Dilutions:

WB 1:5000-1:50000

IF/ICC 1:400-1:1600

Applications

Tested Applications:

WB, IF/ICC, ELISA

Species Specificity:

human, mouse, rat, pig

Positive Controls:

WB : HEK-293 cells, HeLa cells, PC-3 cells, Jurkat cells, pig brain tissue, rat brain tissue, mouse brain tissue

IF/ICC : HeLa cells,

Background Information

ENO1, also named as NNE, ENO1L1, MBPB1, MPB1 and MBP1, belongs to the enolase family. ENO1 is a metabolic enzyme involved in the synthesis of pyruvate. It also acts as a plasminogen receptor and mediates the activation of plasmin and extracellular matrix degradation. In tumor cells, ENO1 is up-regulated and supports the Warburg effect; it is expressed at the cell surface, where it promotes cancer invasion, and is subjected to a specific array of post-translational modifications, namely acetylation, methylation and phosphorylation. ENO1 overexpression and post-translational modifications could be of diagnostic and prognostic value in many cancer types. (PMID: 27814656)

Storage

Storage:

Store at -20°C. Stable for one year after shipment.

Storage Buffer:

PBS with 0.02% sodium azide and 50% glycerol pH 7.3.

Aliquoting is unnecessary for -20°C storage

*** 20ul sizes contain 0.1% BSA

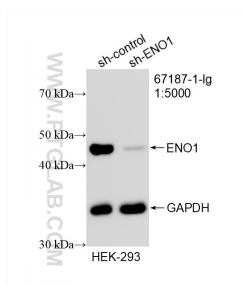
For technical support and original validation data for this product please contact:

T: 1 (888) 4PTGLAB (1-888-478-4522) (toll free in USA), or 1(312) 455-8498 (outside USA)

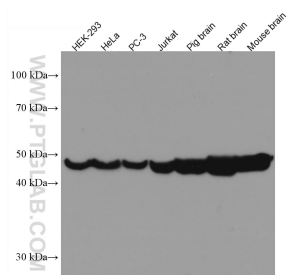
E: proteintech@ptglab.com
W: ptglab.com

This product is exclusively available under Proteintech Group brand and is not available to purchase from any other manufacturer.

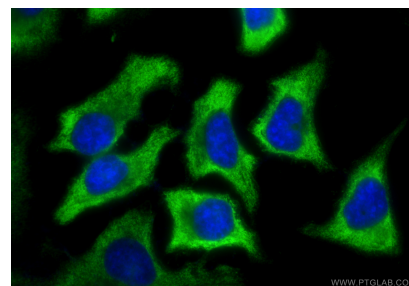
Selected Validation Data



WB result of ENO1 antibody (67187-1-Ig; 1:5000; incubated at room temperature for 1.5 hours) with sh-Control and sh-ENO1 transfected HEK-293 cells.



Various lysates were subjected to SDS PAGE followed by western blot with 67187-1-Ig (ENO1 antibody) at dilution of 1:10000 incubated at room temperature for 1.5 hours.



Immunofluorescent analysis of (-20°C Ethanol) fixed HeLa cells using ENO1 antibody (67187-1-Ig, Clone: 1D6E8) at dilution of 1:800 and CoraLite®488-Conjugated Goat Anti-Mouse IgG(H+L) (SA00013-1).