

## KIF20A Monoclonal antibody

Catalog Number: 67190-1-Ig

Featured Product

7 Publications

## Basic Information

<b>Catalog Number:</b> 67190-1-Ig	<b>GenBank Accession Number:</b> BC012999	<b>Purification Method:</b> Protein A purification
<b>Size:</b> 150ul, Concentration: 2000 µg/ml by Nanodrop and 1000 µg/ml by Bradford method using BSA as the standard;	<b>GeneID (NCBI):</b> 10112	<b>CloneNo.:</b> 2A8E3
<b>Source:</b> Mouse	<b>Full Name:</b> kinesin family member 20A	<b>Recommended Dilutions:</b> WB 1:5000-1:50000 IHC 1:200-1:800 IF 1:50-1:500
<b>Isotype:</b> IgG1	<b>Calculated MW:</b> 890 aa, 100 kDa	
<b>Immunogen Catalog Number:</b> AG8916	<b>Observed MW:</b> 100 kDa	

## Applications

<b>Tested Applications:</b> IF, IHC, WB, ELISA	<b>Positive Controls:</b>
<b>Cited Applications:</b> IF, IHC, WB	<b>WB :</b> HepG2 cells, HeLa cells, HEK-293 cells, Jurkat cells, HL-60 cells, HSC-T6 cells, PC-12 cells, NIH/3T3 cells
<b>Species Specificity:</b> Human, Rat, Mouse	<b>IHC :</b> human breast cancer tissue, human pancreas cancer tissue
<b>Cited Species:</b> human, mouse	<b>IF :</b> HeLa cells,
<b>Note-IHC: suggested antigen retrieval with TE buffer pH 9.0; (*) Alternatively, antigen retrieval may be performed with citrate buffer pH 6.0</b>	

## Background Information

KIF20A, also known as RAB6KIFL or MKlp2, is a kinesin originally identified as a binding partner for the rab6 GTPase involved in protein transport at the Golgi apparatus. KIF20A belongs to a large family of motor proteins that accumulate in mitotic cells and is required for normal cell division. KIF20A is thought to be involved in carcinogenesis. In normal tissues KIF20A is almost undetectable while it is overexpressed in various cancers. KIF20A has been identified as a novel promising candidate for anticancer immunotherapy.

## Notable Publications

Author	Pubmed ID	Journal	Application
Bingteng Xie	35648393	Cancer Res	IF
Gyu Ik Jung	37973997	Nat Commun	IF
Karen Schindler	37886573	Res Sq	IF

## Storage

**Storage:**  
Store at -20°C. Stable for one year after shipment.

**Storage Buffer:**  
PBS with 0.02% sodium azide and 50% glycerol pH 7.3.

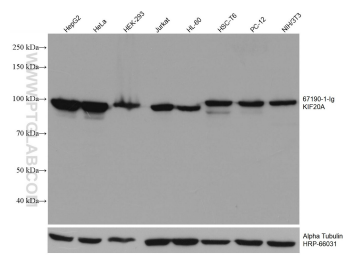
Aliquoting is unnecessary for -20°C storage

\*\*\* 20ul sizes contain 0.1% BSA

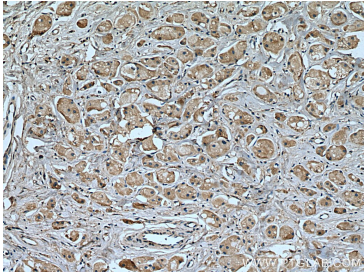
For technical support and original validation data for this product please contact:  
 T: 1 (888) 4PTGLAB (1-888-478-4522) (toll free in USA), or 1(312) 455-8498 (outside USA)  
 E: [proteintech@ptglab.com](mailto:proteintech@ptglab.com)  
 W: [ptglab.com](http://ptglab.com)

This product is exclusively available under Proteintech Group brand and is not available to purchase from any other manufacturer.

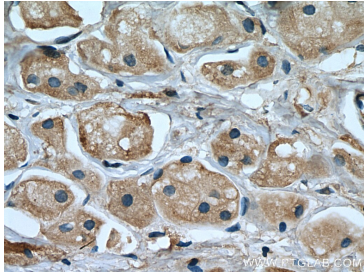
Selected Validation Data



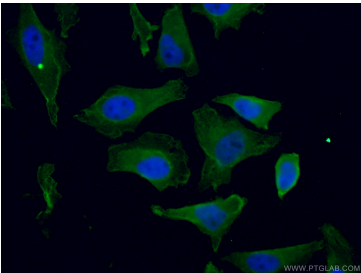
Various lysates were subjected to SDS PAGE followed by western blot with 67190-1-Ig (KIF20A antibody) at dilution of 1:10000 incubated at room temperature for 1.5 hours. The membrane was stripped and reblotted with HRP-conjugated Alpha Tubulin Monoclonal antibody (HRP-66031) as loading control.



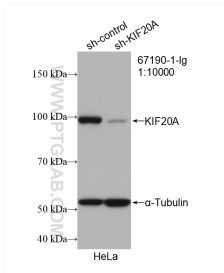
Immunohistochemical analysis of paraffin-embedded human breast cancer tissue slide using 67190-1-Ig (KIF20A antibody) at dilution of 1:400 (under 10x lens). Heat mediated antigen retrieval with Tris-EDTA buffer (pH 9.0).



Immunohistochemical analysis of paraffin-embedded human breast cancer tissue slide using 67190-1-Ig (KIF20A antibody) at dilution of 1:400 (under 40x lens). Heat mediated antigen retrieval with Tris-EDTA buffer (pH 9.0).



Immunofluorescent analysis of (4% PFA) fixed HeLa cells using 67190-1-Ig (KIF20A antibody) at dilution of 1:100 and Coralite488-Conjugated AffiniPure Goat Anti-Mouse IgG(H+L).



WB result of KIF20A antibody (67190-1-Ig; 1:10000; incubated at room temperature for 1.5 hours) with sh-Control and sh-KIF20A transfected HeLa cells.