

For Research Use Only

SHC1 Monoclonal antibody

Catalog Number: 67194-2-Ig



Basic Information

Catalog Number:

67194-2-Ig

Size:

150ul, Concentration: 1000 ug/ml by Nanodrop and 478 ug/ml by Bradford method using BSA as the standard;

Source:

Mouse

Isotype:

IgG2b

Immunogen Catalog Number:

AG25173

GenBank Accession Number:

NM_183001

GeneID (NCBI):

6464

UNIPROT ID:

P29353

Full Name:

SHC (Src homology 2 domain containing) transforming protein 1

Calculated MW:

63 kDa

Observed MW:

66 kDa

Purification Method:

Protein A purification

CloneNo.:

1A5B1

Recommended Dilutions:

WB 1:5000-1:50000

Applications

Tested Applications:

WB, ELISA

Species Specificity:

human

Positive Controls:

WB : TT cells, hTERT-RPE1 cells, PANC-1 cells, HeLa cells

Background Information

The proto-oncogene SHC family consists of SHCA, SHCB, SHCC, and SHCD4 gene members, which can encode 7 kinds of cohesive molecules. SHC family is widely expressed and functional. The SHC1 gene is located in zone 1, region 2 of human chromosome 1. SHC1 is believed to be involved in inhibiting neuronal apoptosis and regulating the receptor tyrosine kinase pathway. SHC1 sensitizes cancer cells to the 8-CL-cAMP treatment.

Storage

Storage:

Store at -20°C. Stable for one year after shipment.

Storage Buffer:

PBS with 0.02% sodium azide and 50% glycerol pH 7.3.

Aliquoting is unnecessary for -20°C storage

*** 20ul sizes contain 0.1% BSA

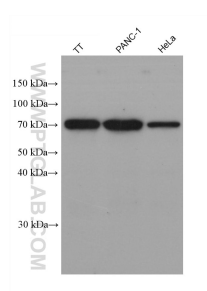
For technical support and original validation data for this product please contact:

T: 1 (888) 4PTGLAB (1-888-478-4522) (toll free in USA), or 1(312) 455-8498 (outside USA)

E: proteintech@ptglab.com
W: ptglab.com

This product is exclusively available under Proteintech Group brand and is not available to purchase from any other manufacturer.

Selected Validation Data



Various lysates were subjected to SDS PAGE followed by western blot with 67194-2-Ig (SHC1 antibody) at dilution of 1:20000 incubated at room temperature for 1.5 hours.