

For Research Use Only

# SHC1 Monoclonal antibody, PBS Only (Capture)

Catalog Number: 67194-2-PBS



## Basic Information

<b>Catalog Number:</b> 67194-2-PBS	<b>GenBank Accession Number:</b> NM_183001	<b>Purification Method:</b> Protein A purification
<b>Size:</b> 100ug , Concentration: 1 mg/ml by Nanodrop;	<b>GeneID (NCBI):</b> 6464	<b>CloneNo.:</b> 1A5B1
<b>Source:</b> Mouse	<b>UNIPROT ID:</b> P29353	
<b>Isotype:</b> IgG2b	<b>Full Name:</b> SHC (Src homology 2 domain containing) transforming protein 1	
<b>Immunogen Catalog Number:</b> AG25173	<b>Calculated MW:</b> 63 kDa	
	<b>Observed MW:</b> 66 kDa	

## Applications

**Tested Applications:**  
WB, Cytometric bead array, Indirect ELISA

**Species Specificity:**  
human

## Product Information

67194-2-PBS targets SHC1 as part of a matched antibody pair:

MP50763-1: 67194-2-PBS capture and 67194-3-PBS detection (validated in Cytometric bead array)

MP50763-3: 67194-2-PBS capture and 67194-4-PBS detection (validated in Cytometric bead array)

Unconjugated mouse monoclonal antibody pair in PBS only (BSA and azide free) storage buffer at a concentration of 1 mg/mL, ready for conjugation.

This conjugation ready format makes antibodies ideal for use in many applications including: ELISAs, multiplex assays requiring matched pairs, mass cytometry, and multiplex imaging applications. Antibody use should be optimized by the end user for each application and assay.

## Background Information

The proto-oncogene SHC family consists of SHCA, SHCB, SHCC, and SHCD4 gene members, which can encode 7 kinds of cohesive molecules. SHC family is widely expressed and functional. The SHC1 gene is located in zone 1, region 2 of human chromosome 1. SHC1 is believed to be involved in inhibiting neuronal apoptosis and regulating the receptor tyrosine kinase pathway. SHC1 sensitizes cancer cells to the 8-CL-cAMP treatment.

## Storage

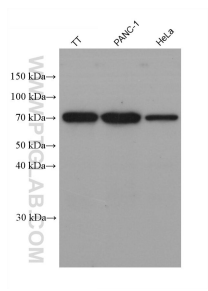
**Storage:**  
Store at -80°C.

**Storage Buffer:**  
PBS Only

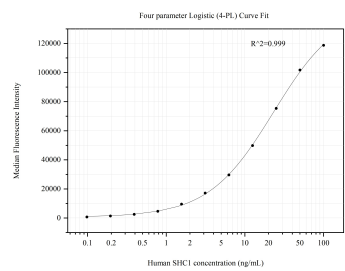
For technical support and original validation data for this product please contact:  
T: 1 (888) 4PTGLAB (1-888-478-4522) (toll free in USA), or 1(312) 455-8498 (outside USA)  
E: [proteintech@ptglab.com](mailto:proteintech@ptglab.com)  
W: [ptglab.com](http://ptglab.com)

This product is exclusively available under Proteintech Group brand and is not available to purchase from any other manufacturer.

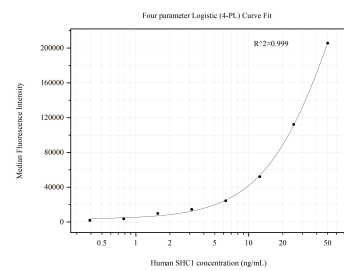
## Selected Validation Data



Various lysates were subjected to SDS PAGE followed by western blot with 67194-2-Ig (SHC1 antibody) at dilution of 1:20000 incubated at room temperature for 1.5 hours. This data was developed using the same antibody clone with 67194-2-PBS in a different storage buffer formulation.



Cytometric bead array standard curve of MP50763-1, SHC1 Monoclonal Matched Antibody Pair, PBS Only. Capture antibody: 67194-2-PBS. Detection antibody: 67194-3-PBS. Standard: Ag25173. Range: 0.098-100 ng/mL.



Cytometric bead array standard curve of MP50763-3, SHC1 Monoclonal Matched Antibody Pair, PBS Only. Capture antibody: 67194-2-PBS. Detection antibody: 67194-4-PBS. Standard: Ag25173. Range: 0.391-50 ng/mL.