

For Research Use Only

YES1 Monoclonal antibody

Catalog Number: 67196-1-Ig

Featured Product



Basic Information

Catalog Number:

67196-1-Ig

Size:

150ul, Concentration: 2700 ug/ml by Nanodrop and 1500 ug/ml by Bradford method using BSA as the standard;

Source:

Mouse

Isotype:

IgG2a

Immunogen Catalog Number:

AG5016

GenBank Accession Number:

BC048960

GeneID (NCBI):

7525

UNIPROT ID:

P07947

Full Name:

v-yes-1 Yamaguchi sarcoma viral oncogene homolog 1

Calculated MW:

61 kDa

Observed MW:

62 kDa

Purification Method:

Protein A purification

CloneNo.:

1A12E7

Recommended Dilutions:

WB 1:1000-1:4000

IHC 1:50-1:500

Applications

Tested Applications:

WB, IHC, ELISA

Species Specificity:

Human, rat

Note-IHC: suggested antigen retrieval with TE buffer pH 9.0; (*) Alternatively, antigen retrieval may be performed with citrate buffer pH 6.0

Positive Controls:

WB : A549 cells, HepG2 cells, HeLa cells, LNCaP cells, A431 cells, HSC-T6 cells, PC-12 cells

IHC : human kidney tissue,

Background Information

YES1, also named as p61-Yes and YES, belongs to the protein kinase superfamily, Tyr protein kinase family and SRC subfamily. It promotes infectivity of Neisseria gonorrhoeae in epithelial cells by phosphorylating MCP/CD46. YES1 catalyzes the reaction: ATP + a [protein]-L-tyrosine = ADP + a [protein]-L-tyrosine phosphate.

Storage

Storage:

Store at -20°C.

Storage Buffer:

PBS with 0.1% sodium azide and 50% glycerol pH 7.3.

Aliquoting is unnecessary for -20°C storage

*** 20ul sizes contain 0.1% BSA

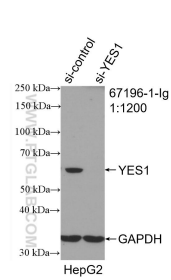
For technical support and original validation data for this product please contact:

T: 1 (888) 4PTGLAB (1-888-478-4522) (toll free in USA), or 1(312) 455-8498 (outside USA)

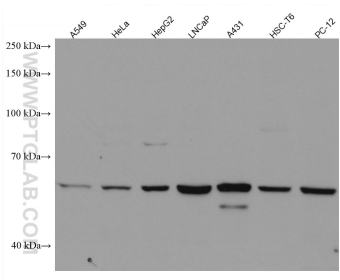
E: proteintech@ptglab.com
W: ptglab.com

This product is exclusively available under Proteintech Group brand and is not available to purchase from any other manufacturer.

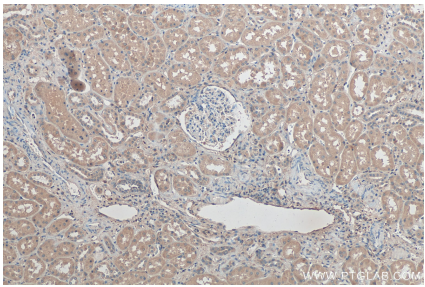
Selected Validation Data



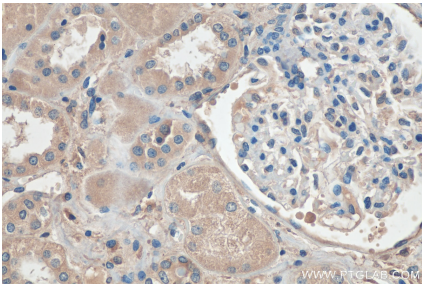
WB result of YES1 antibody (67196-1-Ig: 1:1200; incubated at room temperature for 1.5 hours) with sh-Control and sh-YES1 transfected HepG2 cells.



Various lysates were subjected to SDS PAGE followed by western blot with 67196-1-Ig (YES1 antibody) at dilution of 1:2000 incubated at room temperature for 1.5 hours.



Immunohistochemical analysis of paraffin-embedded human kidney tissue slide using 67196-1-Ig (YES1 antibody) at dilution of 1:200 (under 10x lens). Heat mediated antigen retrieval with Tris-EDTA buffer (pH 9.0).



Immunohistochemical analysis of paraffin-embedded human kidney tissue slide using 67196-1-Ig (YES1 antibody) at dilution of 1:200 (under 40x lens). Heat mediated antigen retrieval with Tris-EDTA buffer (pH 9.0).