

For Research Use Only

UBE1 Monoclonal antibody

Catalog Number: 67198-1-Ig **1 Publications**



Basic Information

Catalog Number: 67198-1-Ig	GenBank Accession Number: BC013041	Purification Method: Protein A purification
Size: 150ul , Concentration: 1800 ug/ml by Nanodrop and 1000 ug/ml by Bradford method using BSA as the standard;	GeneID (NCBI): 7317	CloneNo.: 1H7E8
Source: Mouse	UNIPROT ID: P22314	Recommended Dilutions: WB 1:5000-1:30000 IHC 1:500-1:2000 IF/ICC 1:200-1:800
Isotype: IgG2a	Full Name: ubiquitin-like modifier activating enzyme 1	
Immunogen Catalog Number: AG8920	Calculated MW: 1058 aa, 118 kDa	
	Observed MW: 114-118 kDa	

Applications

Tested Applications: WB, IHC, IF/ICC, ELISA	Positive Controls:
Cited Applications: IHC	WB : HeLa cells, HeLa cell, HEK-293 cells, Jurkat cells, HL-60 cells, K-562 cells, HSC-T6 cells, RAW 264.7 cells, NIH/3T3 cells
Species Specificity: Human, mouse, rat	IHC : human colon cancer tissue, human lung cancer tissue
Cited Species: human	IF/ICC : HeLa cells,
Note-IHC: suggested antigen retrieval with TE buffer pH 9.0; (*) Alternatively, antigen retrieval may be performed with citrate buffer pH 6.0	

Notable Publications

Author	Pubmed ID	Journal	Application
Jinsheng Liu	37417208	Biosci Rep	IHC

Storage

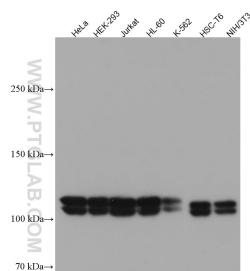
Storage:
Store at -20°C.
Storage Buffer:
PBS with 0.02% sodium azide and 50% glycerol pH 7.3.
Aliquoting is unnecessary for -20°C storage

*** 20ul sizes contain 0.1% BSA

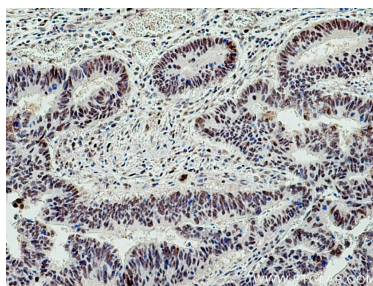
For technical support and original validation data for this product please contact:
T: 1 (888) 4PTGLAB (1-888-478-4522) (toll free in USA), or 1(312) 455-8498 (outside USA)
E: proteintech@ptglab.com
W: ptglab.com

This product is exclusively available under Proteintech Group brand and is not available to purchase from any other manufacturer.

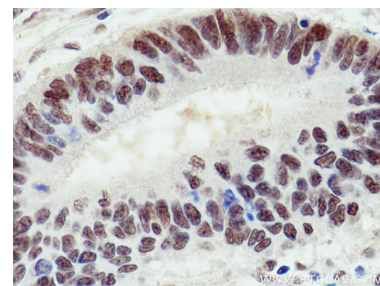
Selected Validation Data



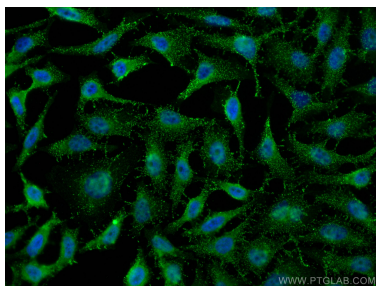
Various lysates were subjected to SDS PAGE followed by western blot with 67198-1-Ig (UBE1 antibody) at dilution of 1:5000 incubated at room temperature for 1.5 hours.



Immunohistochemical analysis of paraffin-embedded human colon cancer tissue slide using 67198-1-Ig (UBE1 antibody) at dilution of 1:1000 (under 10x lens). Heat mediated antigen retrieval with Tris-EDTA buffer (pH 9.0).



Immunohistochemical analysis of paraffin-embedded human colon cancer tissue slide using 67198-1-Ig (UBE1 antibody) at dilution of 1:1000 (under 40x lens). Heat mediated antigen retrieval with Tris-EDTA buffer (pH 9.0).



Immunofluorescent analysis of (4% PFA) fixed HeLa cells using UBE1 antibody (67198-1-Ig, Clone: 1H7E8) at dilution of 1:400 and CoraLite®488-Conjugated Goat Anti-Mouse IgG(H+L).