

# EIF4G1 Monoclonal antibody, PBS Only

Catalog Number: 67199-1-PBS

## Basic Information

<b>Catalog Number:</b> 67199-1-PBS	<b>GenBank Accession Number:</b> BC007788	<b>Purification Method:</b> Protein A purification
<b>Size:</b> 100ug , Concentration: 1 mg/ml by Nanodrop;	<b>GeneID (NCBI):</b> 1981	<b>CloneNo.:</b> 2B10G8
<b>Source:</b> Mouse	<b>UNIPROT ID:</b> Q04637	
<b>Isotype:</b> IgG1	<b>Full Name:</b> eukaryotic translation initiation factor 4 gamma, 1	
<b>Immunogen Catalog Number:</b> AG8357	<b>Calculated MW:</b> 1600 aa, 176 kDa	
	<b>Observed MW:</b> 240-250 kDa	

## Applications

**Tested Applications:**  
WB, IF, IHC, Indirect ELISA

**Species Specificity:**  
Human, mouse, rat

## Background Information

Eukaryotic cellular messenger RNAs are posttranscriptionally modified by addition of an m(7)GTP moiety to the 5-prime terminus, referred to as a cap. Recognition of the cap structure and unwinding of mRNA secondary structure during the initiation phase of protein synthesis is catalyzed by initiation factors of the eIF4 group. EIF4G1, a subunit of eIF4 gamma, forms various complexes with the other eIF4 polypeptides [PMID: 7601469]. Mutations in the EIF4G1 gene, encoding a component of the eIF4F translation initiation complex, were recently reported as a possible cause for the autosomal dominant form of Parkinson's disease [PMID:22658323]. The calculated molecular weight of EIF4G1 is 175 kDa, but modified EIF4G1 is about 220-240 kDa. (PMID: 18426977)

## Storage

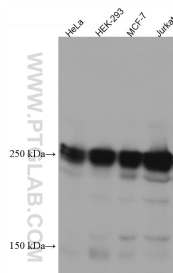
**Storage:**  
Store at -80°C.

**Storage Buffer:**  
PBS Only

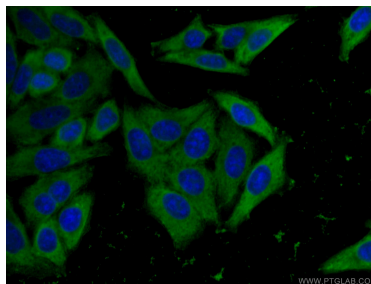
For technical support and original validation data for this product please contact:  
T: 1 (888) 4PTGLAB (1-888-478-4522) (toll free in USA), or 1(312) 455-8498 (outside USA)  
E: [proteintech@ptglab.com](mailto:proteintech@ptglab.com)  
W: [ptglab.com](http://ptglab.com)

This product is exclusively available under Proteintech Group brand and is not available to purchase from any other manufacturer.

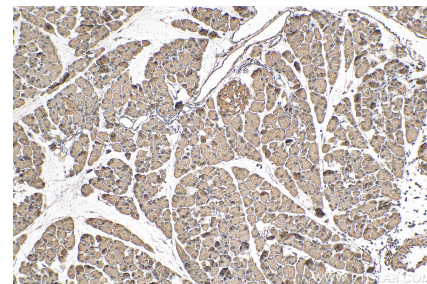
## Selected Validation Data



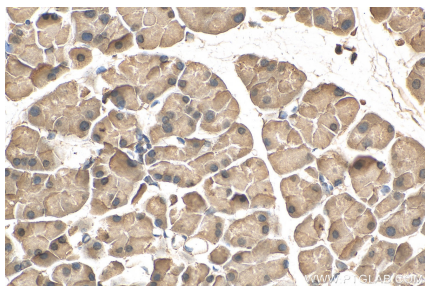
Various lysates were subjected to SDS PAGE followed by western blot with 67199-1-Ig (EIF4G1 antibody) at dilution of 1:10000 incubated at room temperature for 1.5 hours. This data was developed using the same antibody clone with 67199-1-PBS in a different storage buffer formulation.



Immunofluorescent analysis of (-20°C Ethanol) fixed HepG2 cells using 67199-1-Ig (EIF4G1 antibody) at dilution of 1:100 and CoraLite488-Conjugated AffiniPure Goat Anti-Mouse IgG(H+L). This data was developed using the same antibody clone with 67199-1-PBS in a different storage buffer formulation.



Immunohistochemical analysis of paraffin-embedded mouse pancreas tissue slide using 67199-1-Ig (EIF4G1 antibody) at dilution of 1:200 (under 10x lens). Heat mediated antigen retrieval with Tris-EDTA buffer (pH 9.0). This data was developed using the same antibody clone with 67199-1-PBS in a different storage buffer formulation.



Immunohistochemical analysis of paraffin-embedded mouse pancreas tissue slide using 67199-1-Ig (EIF4G1 antibody) at dilution of 1:200 (under 40x lens). Heat mediated antigen retrieval with Tris-EDTA buffer (pH 9.0). This data was developed using the same antibody clone with 67199-1-PBS in a different storage buffer formulation.