

For Research Use Only

SBDS Monoclonal antibody, PBS Only

Catalog Number: 67200-1-PBS

Featured Product



Basic Information

Catalog Number:

67200-1-PBS

Size:

100ug, Concentration: 1mg/ml by Nanodrop;

Source:

Mouse

Isotype:

IgG2a

Immunogen Catalog Number:

AG11731

GenBank Accession Number:

BC065700

GeneID (NCBI):

51119

UNIPROT ID:

Q9Y3A5

Full Name:

Shwachman-Bodian-Diamond syndrome

Calculated MW:

250 aa, 29 kDa

Observed MW:

29-31 kDa

Purification Method:

Protein A purification

CloneNo.:

1F8A10

Applications

Tested Applications:

WB, IHC, IF/ICC, Indirect ELISA

Species Specificity:

human, mouse, rat

Background Information

Shwachman-Bodian-Diamond syndrome (SBDS) is a member of a highly conserved protein family that exists from archaea to vertebrates and plants. The protein may function in RNA metabolism. Mutations within its gene are associated with Shwachman-Bodian-Diamond syndrome. This gene encodes a member of a highly conserved protein family that exists from archaea to vertebrates and plants. The encoded protein may function in RNA metabolism. Mutations within this gene are associated with Shwachman-Bodian-Diamond syndrome. An alternative transcript has been described, but its biological nature has not been determined.

Storage

Storage:

Store at -80°C.

Storage Buffer:

PBS only

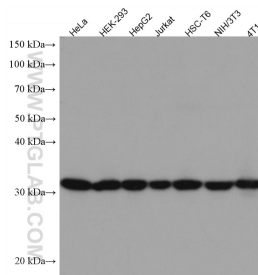
For technical support and original validation data for this product please contact:

T: 1 (888) 4PTGLAB (1-888-478-4522) (toll free in USA), or 1(312) 455-8498 (outside USA)

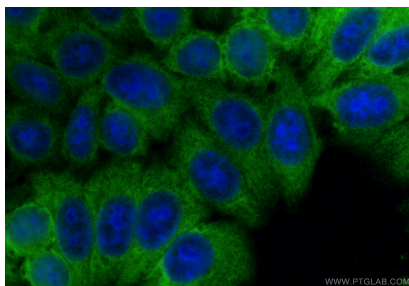
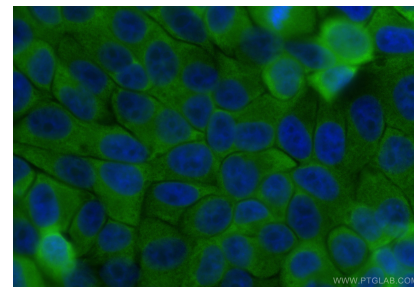
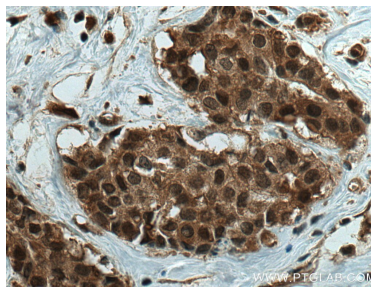
E: proteintech@ptglab.com
W: ptglab.com

This product is exclusively available under Proteintech Group brand and is not available to purchase from any other manufacturer.

Selected Validation Data



Various lysates were subjected to SDS PAGE followed by western blot with 67200-1-Ig (SBDS antibody) at dilution of 1:20000 incubated at room temperature for 1.5 hours. This data was developed using the same antibody clone with 67200-1-PBS in a different storage buffer formulation.



Immunofluorescent analysis of (-20°C Ethanol) fixed HepG2 cells using SBDS antibody (67200-1-Ig, Clone: 1F8A10) at dilution of 1:200 and CoraLite®488-Conjugated Goat Anti-Mouse IgG(H+L) (SA00013-1). This data was developed using the same antibody clone with 67200-1-PBS in a different storage buffer formulation.