

For Research Use Only

# DCC-Specific Monoclonal antibody

Catalog Number: 67203-1-Ig



## Basic Information

<b>Catalog Number:</b> 67203-1-Ig	<b>GenBank Accession Number:</b> NM_005215	<b>Purification Method:</b> Protein A purification
<b>Size:</b> 150ul , Concentration: 2400 µg/ml by Nanodrop and 1000 µg/ml by Bradford method using BSA as the standard;	<b>GeneID (NCBI):</b> 1630	<b>CloneNo.:</b> 2G4G4
<b>Source:</b> Mouse	<b>Full Name:</b> deleted in colorectal carcinoma	<b>Recommended Dilutions:</b> WB 1:1000-1:4000
<b>Isotype:</b> IgG2a	<b>Calculated MW:</b> 1447 aa, 158 kDa	
<b>Immunogen Catalog Number:</b> AG20569	<b>Observed MW:</b> 180 kDa	

## Applications

<b>Tested Applications:</b> WB,ELISA	<b>Positive Controls:</b> WB : mouse brain tissue,
<b>Species Specificity:</b> Human, Mouse	

## Background Information

DCC, also named as IGDC1, belongs to the immunoglobulin superfamily and DCC family. DCC is a receptor for netrin required for axon guidance. DCC plays a key role in the developing nervous system. Its association with UNC5 proteins may trigger signaling for axon repulsion. It also acts as a dependence receptor required for apoptosis induction when not associated with netrin ligand. DCC gene is a tumor suppressor gene. This antibody recognizes endogenous DCC with an apparent molecular weight of 180 kDa. As the predicted molecular mass of DCC is 158 kDa, the slower mobility is likely attributable to post-translational modification, perhaps by glycosylation at potential N-linked glycosylation sites (PMID: 7926722; 8044801).

## Storage

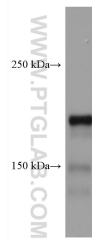
**Storage:**  
Store at -20°C.  
**Storage Buffer:**  
PBS with 0.02% sodium azide and 50% glycerol pH 7.3.  
Aliquoting is unnecessary for -20°C storage

\*\*\* 20ul sizes contain 0.1% BSA

For technical support and original validation data for this product please contact:  
T: 1 (888) 4PTGLAB (1-888-478-4522) (toll free in USA), or 1(312) 455-8498 (outside USA)  
E: proteintech@ptglab.com  
W: ptglab.com

This product is exclusively available under Proteintech Group brand and is not available to purchase from any other manufacturer.

## Selected Validation Data



mouse brain tissue were subjected to SDS PAGE followed by western blot with 67203-1-Ig (DCC-Specific antibody) at dilution of 1:2000 incubated at room temperature for 1.5 hours.