

For Research Use Only

TMEM111 Monoclonal antibody

Catalog Number: 67205-1-Ig

Featured Product

6 Publications



Basic Information

Catalog Number:

67205-1-Ig

GenBank Accession Number:

BC022807

Purification Method:

Protein G purification

Size:

150ul, Concentration: 2100 ug/ml by Nanodrop and 1000 ug/ml by Bradford method using BSA as the standard;

GeneID (NCBI):

55831

CloneNo.:

2F8G5

Source:

Mouse

UNIPROT ID:

Q9POL2

Recommended Dilutions:

WB 1:2000-1:10000

IHC 1:250-1:1000

IF/ICC 1:200-1:800

Isotype:

IgG1

Full Name:

transmembrane protein 111

Calculated MW:

261 aa, 30 kDa

Immunogen Catalog Number:

AG18365

Observed MW:

30 kDa

Applications

Tested Applications:

WB, IHC, IF/ICC, ELISA

Cited Applications:

WB, IF, IP

Species Specificity:

human, mouse, rat, pig

Cited Species:

human

Note-IHC: suggested antigen retrieval with TE buffer pH 9.0; (*) Alternatively, antigen retrieval may be performed with citrate buffer pH 6.0

Positive Controls:

WB : HEK-293 cells, HeLa cells, human heart tissue, pig heart tissue, rat heart tissue, mouse heart tissue, HepG2 cells, Jurkat cells, HSC-T6, NIH/3T3 cells, 4T1 cells

IHC : mouse lung tissue,

IF/ICC : A431 cells,

Background Information

TMEM111, also names as EMC3, is part of the endoplasmic reticulum-associated secretory pathway (PMID: 19797678). TMEM111 was required for murine pulmonary surfactant synthesis and lung function at birth (PMID: 29083321). It can be detect a band of 30 kDa.

Notable Publications

Author	Pubmed ID	Journal	Application
Alina Guna	36264797	Science	WB
Tino Pleiner	33964204	Mol Cell	IP
Jose M Delgado	38177312	EMBO J	IF

Storage

Storage:

Store at -20°C. Stable for one year after shipment.

Storage Buffer:

PBS with 0.02% sodium azide and 50% glycerol, pH7.3

Aliquoting is unnecessary for -20°C storage

*** 20ul sizes contain 0.1% BSA

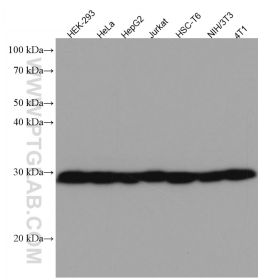
For technical support and original validation data for this product please contact:

T: 1 (888) 4PTGLAB (1-888-478-4522) (toll free in USA), or 1(312) 455-8498 (outside USA)

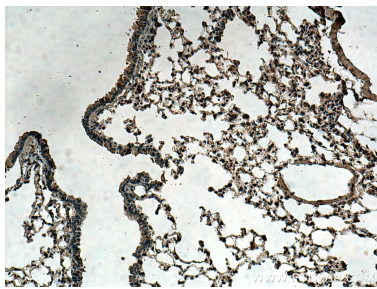
E: proteintech@ptglab.com
W: ptglab.com

This product is exclusively available under Proteintech Group brand and is not available to purchase from any other manufacturer.

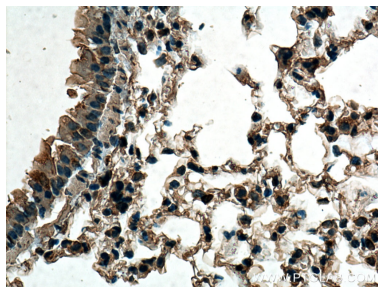
Selected Validation Data



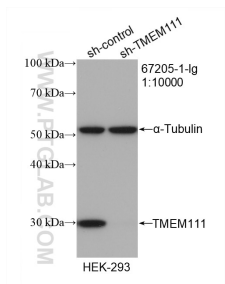
Various lysates were subjected to SDS PAGE followed by western blot with 67205-1-Ig (TMEM111 antibody) at dilution of 1:5000 incubated at room temperature for 1.5 hours.



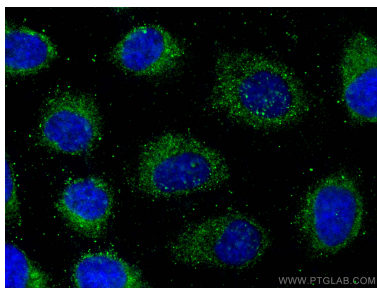
Immunohistochemical analysis of paraffin-embedded mouse lung tissue slide using 67205-1-Ig (TMEM111 antibody) at dilution of 1:500 (under 10x lens). Heat mediated antigen retrieval with Tris-EDTA buffer (pH 9.0).



Immunohistochemical analysis of paraffin-embedded mouse lung tissue slide using 67205-1-Ig (TMEM111 antibody) at dilution of 1:500 (under 40x lens). Heat mediated antigen retrieval with Tris-EDTA buffer (pH 9.0).



WB result of TMEM111 antibody (67205-1-Ig; 1:10000; incubated at room temperature for 1.5 hours) with sh-Control and sh-TMEM111 transfected HEK-293 cells.



Immunofluorescent analysis of (-20°C Methanol) fixed A431 cells using TMEM111 antibody (67205-1-Ig, Clone: 2F8G5) at dilution of 1:400 and Coralite®488-Conjugated AffiniPure Goat Anti-Mouse IgG(H+L) (SA00013-1).