

For Research Use Only

WNT10B Monoclonal antibody, PBS Only (Detector)

Catalog Number: 67210-3-PBS



Basic Information

Catalog Number: 67210-3-PBS	GenBank Accession Number: BC096353	Purification Method: Protein G Magarose purification
Size: 100ug , Concentration: 1 mg/ml by Nanodrop;	GeneID (NCBI): 7480	CloneNo.: 1G2B6
Source: Mouse	UNIPROT ID: O00744	
Isotype: IgG1	Full Name: wingless-type MMTV integration site family, member 10B	
Immunogen Catalog Number: AG17114	Calculated MW: 389 aa, 43 kDa	

Applications

Tested Applications:
Cytometric bead array, Indirect ELISA

Species Specificity:
human

Product Information

67210-3-PBS targets WNT10B as part of a matched antibody pair.

MP51624-1: 67210-2-PBS capture and 67210-3-PBS detection (validated in Cytometric bead array)

Unconjugated mouse monoclonal antibody pair in PBS only (BSA and azide free) storage buffer at a concentration of 1 mg/mL, ready for conjugation.

This conjugation ready format makes antibodies ideal for use in many applications including: ELISAs, multiplex assays requiring matched pairs, mass cytometry, and multiplex imaging applications. Antibody use should be optimized by the end user for each application and assay.

Storage

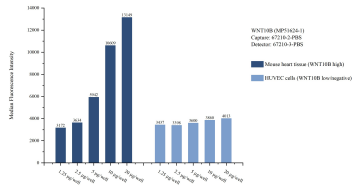
Storage:
Store at -80°C.

Storage Buffer:
PBS only, pH7.3

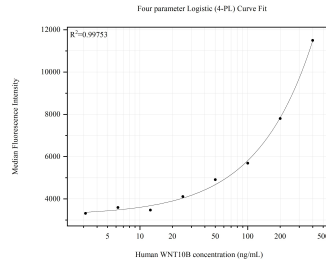
For technical support and original validation data for this product please contact:
T: 1 (888) 4PTGLAB (1-888-478-4522) (toll free in USA), or 1(312) 455-8498 (outside USA) E: proteintech@ptglab.com
W: ptglab.com

This product is exclusively available under Proteintech Group brand and is not available to purchase from any other manufacturer.

Selected Validation Data



Cytometric bead array sample test of MP51624-1, WNT10B Monoclonal Matched Antibody Pair, PBS Only. Capture antibody: 67210-2-PBS. Detection antibody: 67210-3-PBS.



Cytometric bead array standard curve of MP51624-1, WNT10B Monoclonal Matched Antibody Pair, PBS Only. Capture antibody: 67210-2-PBS. Detection antibody: 67210-3-PBS. Standard: Ag17114. Range: 3.12-400 ng/mL.