

For Research Use Only

CDC42 Monoclonal antibody

Catalog Number: 67212-1-Ig



Basic Information

Catalog Number: 67212-1-Ig	GenBank Accession Number: BC002711	Purification Method: Caprylic acid/ammonium sulfate precipitation
Size: 150ul , Concentration: 1000 µg/ml by Bradford method using BSA as the standard;	GeneID (NCBI): 998	CloneNo.: 2G5E8
Source: Mouse	Full Name: cell division cycle 42 (GTP binding protein, 25kDa)	Recommended Dilutions: WB 1:5000-1:20000
Isotype: IgM	Calculated MW: 21 kDa	
Immunogen Catalog Number: AG28550	Observed MW: 21 kDa	

Applications

Tested Applications: WB, ELISA	Positive Controls: WB : HeLa cells, rat brain tissue, mouse cerebellum tissue, HEK-293 cells, MCF-7 cells, Jurkat cells, HSC-T6 cells, NIH/3T3 cells, mouse brain tissue
Species Specificity: Human, mouse, rat	

Background Information

Cdc42, the human homologue of the cell division cycle 42 of *Saccharomyces cerevisiae*, belongs to the Rho/Rac subfamily of Ras-like GTPases. It acts as molecular switches to regulate numerous cellular responses including the organization of the actin cytoskeleton, gene transcription, cell cycle progression, and membrane trafficking

Storage

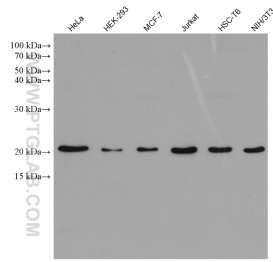
Storage:
Store at -20°C. Stable for one year after shipment.
Storage Buffer:
PBS with 0.1% sodium azide and 50% glycerol pH 7.3.
Aliquoting is unnecessary for -20°C storage

*** 20ul sizes contain 0.1% BSA

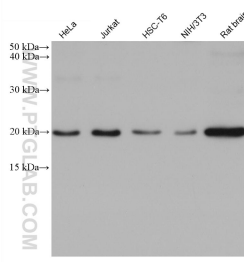
For technical support and original validation data for this product please contact:
T: 1 (888) 4PTGLAB (1-888-478-4522) (toll free in USA), or 1(312) 455-8498 (outside USA) E: proteintech@ptglab.com W: ptglab.com

This product is exclusively available under Proteintech Group brand and is not available to purchase from any other manufacturer.

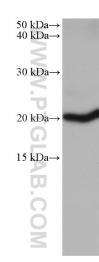
Selected Validation Data



Various lysates were subjected to SDS PAGE followed by western blot with 67212-1-Ig (CDC42 antibody) at dilution of 1:10000 incubated at room temperature for 1.5 hours.



Various lysates were subjected to SDS PAGE followed by western blot with 67212-1-Ig (CDC42 antibody) at dilution of 1:5000 incubated at room temperature for 1.5 hours.



mouse cerebellum tissue were subjected to SDS PAGE followed by western blot with 67212-1-Ig (CDC42 antibody) at dilution of 1:5000 incubated at room temperature for 1.5 hours.