

For Research Use Only

p130Cas / BCAR1 Monoclonal antibody

Catalog Number: 67215-1-Ig **2 Publications**



Basic Information

Catalog Number:	GenBank Accession Number:	Purification Method:
67215-1-Ig	BC062556	Protein A purification
Size:	GeneID (NCBI):	CloneNo.:
150ul, Concentration: 2028 ug/ml by Nanodrop and 1000 ug/ml by Bradford method using BSA as the standard;	9564	2D11C10
Source:	UNIPROT ID:	Recommended Dilutions:
Mouse	P56945	WB 1:2000-1:10000
Isotype:	Full Name:	IHC 1:250-1:1000
IgG2a	breast cancer anti-estrogen resistance	IF-P 1:200-1:800
Immunogen Catalog Number:	Calculated MW:	
AG10604	870 aa, 93 kDa	
	Observed MW:	
	116 kDa	

Applications

Tested Applications:	Positive Controls:
WB, IHC, IF-P, FC (Intra), ELISA	WB : HEK-293 cells, A431 cells, HeLa cells, MCF-7 cells, T-47D cells, MDA-MB-453s cells
Cited Applications:	IHC : human breast cancer tissue, human colon cancer tissue
WB, IF	IF-P : human breast cancer tissue,
Species Specificity:	
human	
Cited Species:	
human	

Note-IHC: suggested antigen retrieval with TE buffer pH 9.0; (*) Alternatively, antigen retrieval may be performed with citrate buffer pH 6.0

Notable Publications

Author	Pubmed ID	Journal	Application
Tingting Hu	35360840	Front Genet	WB
Liyang Wu	34956399	Comput Math Methods Med	IF

Storage

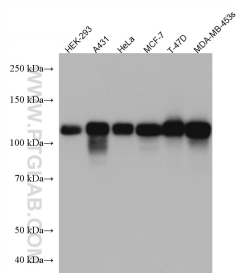
Storage:
Store at -20°C. Stable for one year after shipment.
Storage Buffer:
PBS with 0.02% sodium azide and 50% glycerol pH 7.3.
Aliquoting is unnecessary for -20°C storage

*** 20ul sizes contain 0.1%BSA

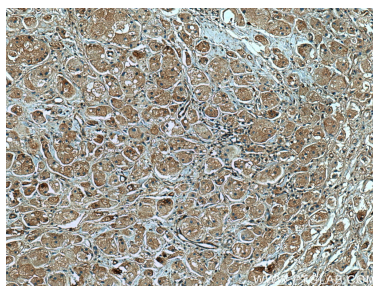
For technical support and original validation data for this product please contact:
T: 1 (888) 4PTGLAB (1-888-478-4522) (toll free in USA), or 1(312) 455-8498 (outside USA)
E: proteintech@ptglab.com
W: ptglab.com

This product is exclusively available under Proteintech Group brand and is not available to purchase from any other manufacturer.

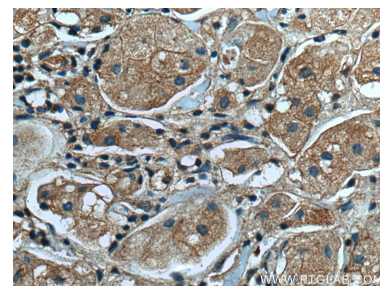
Selected Validation Data



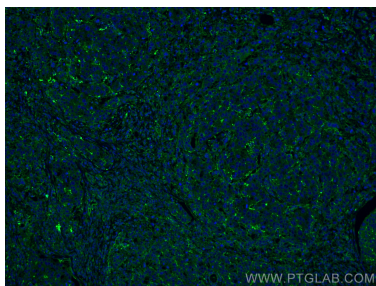
Various lysates were subjected to SDS PAGE followed by western blot with 67215-1-Ig (p130Cas / BCAR1 antibody) at dilution of 1:5000 incubated at room temperature for 1.5 hours.



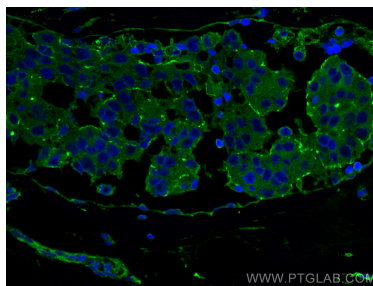
Immunohistochemical analysis of paraffin-embedded human breast cancer tissue slide using 67215-1-Ig (p130Cas / BCAR1 antibody) at dilution of 1:500 (under 10x lens). Heat mediated antigen retrieval with Tris-EDTA buffer (pH 9.0).



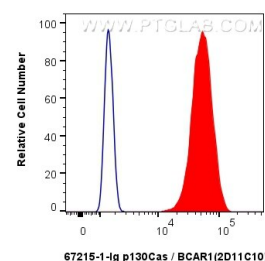
Immunohistochemical analysis of paraffin-embedded human breast cancer tissue slide using 67215-1-Ig (p130Cas / BCAR1 antibody) at dilution of 1:500 (under 40x lens). Heat mediated antigen retrieval with Tris-EDTA buffer (pH 9.0).



Immunofluorescent analysis of (4% PFA) fixed human breast cancer tissue using p130Cas / BCAR1 antibody (67215-1-Ig, Clone: 2D11C10) at dilution of 1:400 and CoraLite®488-Conjugated AffiniPure Goat Anti-Mouse IgG(H+L).



Immunofluorescent analysis of (4% PFA) fixed human breast cancer tissue using BCAR1 antibody (67215-1-Ig, Clone: 2D11C10) at dilution of 1:400 and CoraLite®488-Conjugated AffiniPure Goat Anti-Mouse IgG(H+L).



1x10⁶ A431 cells were intracellularly stained with 0.25 ug p130Cas / BCAR1 Monoclonal antibody (67215-1-Ig, Clone:2D11C10) and CoraLite®488-Conjugated Goat Anti-Mouse IgG(H+L) (SA00013-1)(red), or 0.25 ug Mouse IgG2a isotype control Mouse McAb (66360-2-Ig, Clone: 11A1B2) (blue). Cells were fixed with 4% PFA and permeabilized with Flow Cytometry Perm Buffer (PF00011-C).