

For Research Use Only

SLC31A1 Monoclonal antibody

Catalog Number: 67221-1-Ig

Featured Product

13 Publications



Basic Information

Catalog Number:

67221-1-Ig

Size:

150ul, Concentration: 2500 ug/ml by Nanodrop and 1000 ug/ml by Bradford method using BSA as the standard;

Source:

Mouse

Isotype:

IgG2b

Immunogen Catalog Number:

AG28410

GenBank Accession Number:

BC013611

GeneID (NCBI):

1317

UNIPROT ID:

O15431

Full Name:

solute carrier family 31 (copper transporters), member 1

Calculated MW:

21 kDa

Observed MW:

32 kDa

Purification Method:

Protein A purification

CloneNo.:

1A4H5

Recommended Dilutions:

WB 1:5000-1:20000

IHC 1:1000-1:4000

IF-P 1:50-1:500

Applications

Tested Applications:

WB, IHC, IF-P, ELISA

Cited Applications:

WB, IHC, IF

Species Specificity:

Human

Cited Species:

human

Note-IHC: suggested antigen retrieval with TE buffer pH 9.0; (*) Alternatively, antigen retrieval may be performed with citrate buffer pH 6.0

Positive Controls:

WB : HepG2 cells, HeLa cells

IHC : human liver cancer tissue,

IF-P : human liver cancer tissue,

Notable Publications

Author	Pubmed ID	Journal	Application
Sandrine Tury	35652657	J Virol	WB
Xudong Li	39904115	Neoplasia	IHC,IF
Xiaochun Xia	39583249	Onco Targets Ther	IHC

Storage

Storage:

Store at -20°C. Stable for one year after shipment.

Storage Buffer:

PBS with 0.02% sodium azide and 50% glycerol, pH7.3

Aliquoting is unnecessary for -20°C storage

*** 20ul sizes contain 0.1% BSA

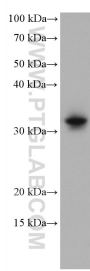
For technical support and original validation data for this product please contact:

T: 1 (888) 4PTGLAB (1-888-478-4522) (toll free in USA), or 1(312) 455-8498 (outside USA)

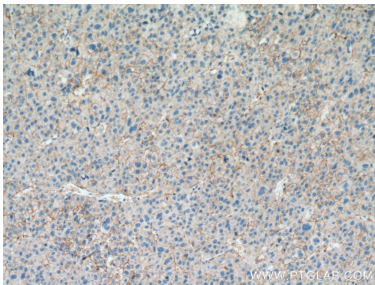
E: proteintech@ptglab.com
W: ptglab.com

This product is exclusively available under Proteintech Group brand and is not available to purchase from any other manufacturer.

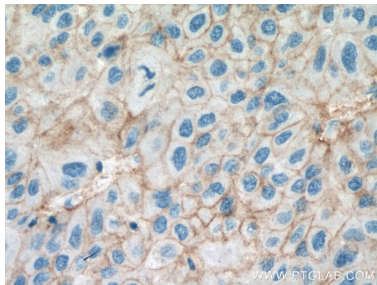
Selected Validation Data



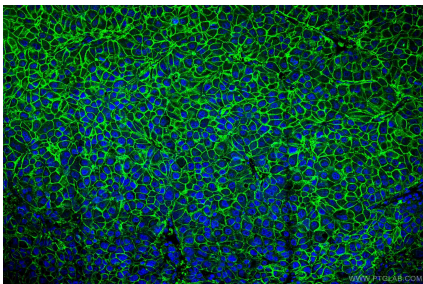
HepG2 cells were subjected to SDS PAGE followed by western blot with 67221-1-Ig (SLC31A1 antibody) at dilution of 1:20000 incubated at room temperature for 1.5 hours.



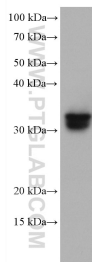
Immunohistochemical analysis of paraffin-embedded human liver cancer tissue slide using 67221-1-Ig (SLC31A1 antibody) at dilution of 1:2000 (under 10x lens). Heat mediated antigen retrieval with Tris-EDTA buffer (pH 9.0).



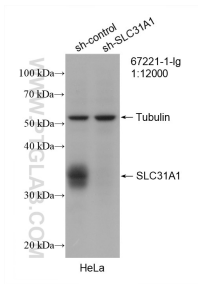
Immunohistochemical analysis of paraffin-embedded human liver cancer tissue slide using 67221-1-Ig (SLC31A1 antibody) at dilution of 1:2000 (under 40x lens). Heat mediated antigen retrieval with Tris-EDTA buffer (pH 9.0).



Immunofluorescent analysis of (4% PFA) fixed human liver cancer tissue using 67221-1-Ig (SLC31A1 antibody) at dilution of 1:100 and CoraLite488-Conjugated Goat Anti-Mouse IgG(H+L).



HeLa cells were subjected to SDS PAGE followed by western blot with 67221-1-Ig (SLC31A1 antibody) at dilution of 1:20000 incubated at room temperature for 1.5 hours.



WB result of SLC31A1 antibody (67221-1-Ig; 1:12000; incubated at room temperature for 1.5 hours) with sh-Control and sh-SLC31A1 transfected HeLa cells.