

For Research Use Only

SLC31A1 Monoclonal antibody

Catalog Number: 67221-1-Ig

Featured Product

5 Publications



Basic Information

Catalog Number: 67221-1-Ig	GenBank Accession Number: BC013611	Purification Method: Protein A purification
Size: 150ul , Concentration: 2500 µg/ml by Nanodrop and 1000 µg/ml by Bradford method using BSA as the standard;	GeneID (NCBI): 1317	CloneNo.: 1A4H5
Source: Mouse	Full Name: solute carrier family 31 (copper transporters), member 1	Recommended Dilutions: WB 1:5000-1:20000 IHC 1:1000-1:4000 IF 1:50-1:500
Isotype: IgG2b	Calculated MW: 21 kDa	
Immunogen Catalog Number: AG28410	Observed MW: 32 kDa	

Applications

Tested Applications:
FC, IF, IHC, WB, ELISA

Cited Applications:
IF, IHC, WB

Species Specificity:
Human

Cited Species:
human

Note-IHC: suggested antigen retrieval with TE buffer pH 9.0; (*) Alternatively, antigen retrieval may be performed with citrate buffer pH 6.0

Positive Controls:

WB : HepG2 cells, HeLa cells

IHC : human liver cancer tissue,

IF : human liver cancer tissue,

Background Information

Notable Publications

Author	Pubmed ID	Journal	Application
Sandrine Tury	35652657	J Virol	WB
Mengxi Wang	38085668	Aging (Albany NY)	WB,IF
Sandrine Tury	37682705	Cell Rep	WB

Storage

Storage:

Store at -20°C. Stable for one year after shipment.

Storage Buffer:

PBS with 0.02% sodium azide and 50% glycerol pH 7.3.

Aliquoting is unnecessary for -20°C storage

*** 20ul sizes contain 0.1% BSA

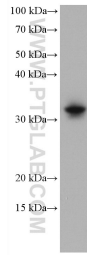
For technical support and original validation data for this product please contact:

T: 1 (888) 4PTGLAB (1-888-478-4522) (toll free in USA), or 1(312) 455-8498 (outside USA)

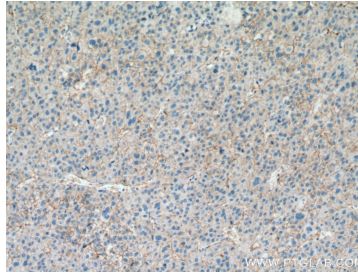
E: proteintech@ptglab.com
W: ptglab.com

This product is exclusively available under Proteintech Group brand and is not available to purchase from any other manufacturer.

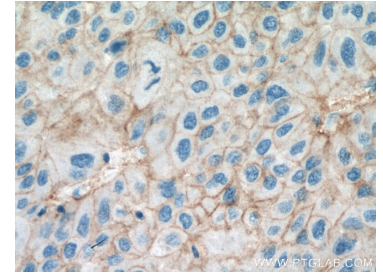
Selected Validation Data



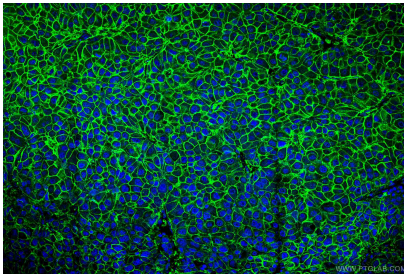
HepG2 cells were subjected to SDS PAGE followed by western blot with 67221-1-Ig (SLC31A1 antibody) at dilution of 1:20000 incubated at room temperature for 1.5 hours.



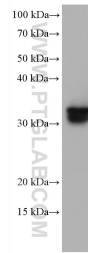
Immunohistochemical analysis of paraffin-embedded human liver cancer tissue slide using 67221-1-Ig (SLC31A1 antibody) at dilution of 1:2000 (under 10x lens). Heat mediated antigen retrieval with Tris-EDTA buffer (pH 9.0).



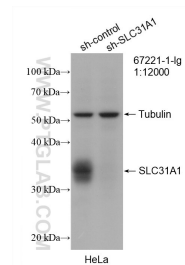
Immunohistochemical analysis of paraffin-embedded human liver cancer tissue slide using 67221-1-Ig (SLC31A1 antibody) at dilution of 1:2000 (under 40x lens). Heat mediated antigen retrieval with Tris-EDTA buffer (pH 9.0).



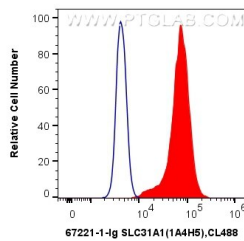
Immunofluorescent analysis of (4% PFA) fixed human liver cancer tissue using 67221-1-Ig (SLC31A1 antibody) at dilution of 1:100 and CoraLite488-Conjugated AffiniPure Goat Anti-Mouse IgG(H+L).



HeLa cells were subjected to SDS PAGE followed by western blot with 67221-1-Ig (SLC31A1 antibody) at dilution of 1:20000 incubated at room temperature for 1.5 hours.



WB result of SLC31A1 antibody (67221-1-Ig; 1:12000; incubated at room temperature for 1.5 hours) with sh-Control and sh-SLC31A1 transfected HeLa cells.



1X10⁶ HeLa cells were intracellularly stained with 0.4 ug Anti-Human SLC31A1 (67221-1-Ig, Clone:1A4H5) and CoraLite[®]488-Conjugated AffiniPure Goat Anti-Mouse IgG(H+L) at dilution 1:1000 (red), or 0.4 ug Control Antibody. Cells were fixed with 4% PFA and permeabilized with Flow Cytometry Perm Buffer (PF00011-C).