

For Research Use Only

XRCC3 Monoclonal antibody

Catalog Number: 67222-1-Ig



Basic Information

Catalog Number:

67222-1-Ig

Size:

150ul, Concentration: 1300 ug/ml by Nanodrop and 1000 ug/ml by Bradford method using BSA as the standard;

Source:

Mouse

Isotype:

IgG2b

Immunogen Catalog Number:

AG13317

GenBank Accession Number:

BC011725

GeneID (NCBI):

7517

UNIPROT ID:

O43542

Full Name:

X-ray repair complementing defective repair in Chinese hamster cells 3

Calculated MW:

38 kDa

Observed MW:

38 kDa

Purification Method:

Protein A purification

CloneNo.:

3A12F9

Recommended Dilutions:

WB 1:1000-1:6000

IP 0.5-4.0 ug for 1.0-3.0 mg of total

protein lysate

IHC 1:150-1:600

IF-P 1:200-1:800

Applications

Tested Applications:

WB, IHC, IF-P, IP, ELISA

Species Specificity:

Human, Mouse

Note-IHC: suggested antigen retrieval with TE buffer pH 9.0; (*) Alternatively, antigen retrieval may be performed with citrate buffer pH 6.0

Positive Controls:

WB : NCI-H1299 cells, HT-29 cells, Caco-2 cells, HT-1080 cells, HeLa cells, MCF-7 cells, COLO 320 cells

IP : MCF-7 cells,

IHC : mouse testis tissue, human placenta tissue

IF-P : mouse testis tissue,

Storage

Storage:

Store at -20°C. Stable for one year after shipment.

Storage Buffer:

PBS with 0.02% sodium azide and 50% glycerol pH 7.3.

Aliquoting is unnecessary for -20°C storage

*** 20ul sizes contain 0.1% BSA

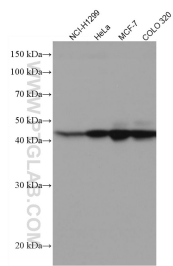
For technical support and original validation data for this product please contact:

T: 1 (888) 4PTGLAB (1-888-478-4522) (toll free in USA), or 1(312) 455-8498 (outside USA)

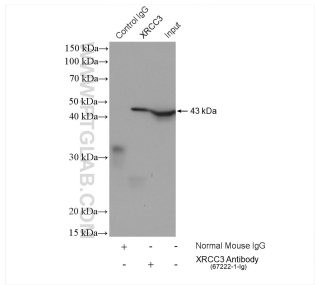
E: proteintech@ptglab.com
W: ptglab.com

This product is exclusively available under Proteintech Group brand and is not available to purchase from any other manufacturer.

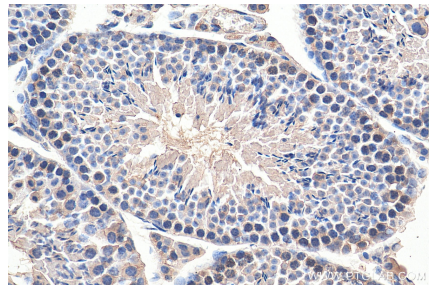
Selected Validation Data



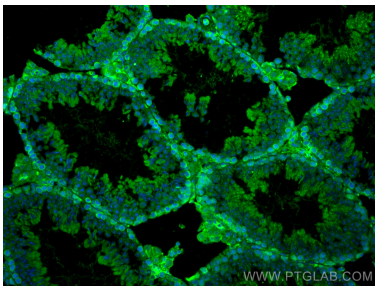
Various lysates were subjected to SDS PAGE followed by western blot with 67222-1-Ig (XRCC3 antibody) at dilution of 1:3000 incubated at room temperature for 1.5 hours.



IP result of anti-XRCC3 (IP:67222-1-Ig, 5ug; Detection:67222-1-Ig 1:500) with MCF-7 cells lysate 640 ug.



Immunohistochemical analysis of paraffin-embedded mouse testis tissue slide using 67222-1-Ig (XRCC3 antibody) at dilution of 1:300 (under 40x lens). Heat mediated antigen retrieval with Tris-EDTA buffer (pH 9.0).



Immunofluorescent analysis of (4% PFA) fixed mouse testis tissue using XRCC3 antibody (67222-1-Ig, Clone: 3A12F9) at dilution of 1:400 and CoraLite®488-Conjugated AffiniPure Goat Anti-Mouse IgG(H+L).