

# DUOX1 Monoclonal antibody, PBS Only

Catalog Number: 67226-1-PBS

## Basic Information

<b>Catalog Number:</b> 67226-1-PBS	<b>GenBank Accession Number:</b> BC114938	<b>Purification Method:</b> Protein A purification
<b>Size:</b> 100ug , Concentration: 1 mg/ml by Nanodrop;	<b>GeneID (NCBI):</b> 53905	<b>CloneNo.:</b> 3B8D6
<b>Source:</b> Mouse	<b>UNIPROT ID:</b> Q9NRD9	
<b>Isotype:</b> IgG2a	<b>Full Name:</b> dual oxidase 1	
<b>Immunogen Catalog Number:</b> AG18154	<b>Calculated MW:</b> 1551 aa, 177 kDa	
	<b>Observed MW:</b> 190-200 kDa, 177 kDa, 138 kDa	

## Applications

**Tested Applications:**  
WB, IF, Indirect ELISA

**Species Specificity:**  
Human, mouse

## Background Information

DUOX1 (dual oxidase 1) is a calciumactivated transmembrane protein member of the NOX family of NADPH oxidases principally located on the apical surface of airway and thyroid epithelia (PMID: 28982074, 15677770, 10806195). DUOX1 is a strong generator of hydrogen peroxide (H<sub>2</sub>O<sub>2</sub>), via intra-molecular dismutation of superoxide (PMID: 25586178). Epithelial DUOX1 appears to participate in additional host defense actions, such as mucociliary clearance, and may contribute to inflammatory responses and epithelial repair processes during exogenous stress (PMID: 19386603). DUOX1 has two isoforms with the calculated molecular mass of 177 and 138 kDa, and apparent molecular mass of 180-200 kDa due to the glycosylation (PMID: 17643428, 19144650).

## Storage

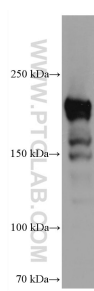
**Storage:**  
Store at -80°C.

**Storage Buffer:**  
PBS Only

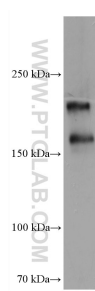
For technical support and original validation data for this product please contact:  
T: 1 (888) 4PTGLAB (1-888-478-4522) (toll free in USA), or 1(312) 455-8498 (outside USA)  
E: [proteintech@ptglab.com](mailto:proteintech@ptglab.com)  
W: [ptglab.com](http://ptglab.com)

This product is exclusively available under Proteintech Group brand and is not available to purchase from any other manufacturer.

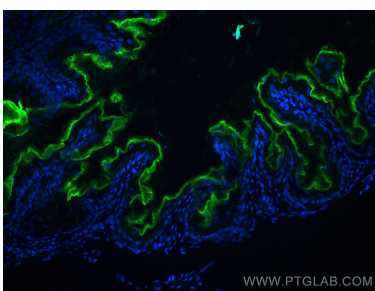
## Selected Validation Data



human testis tissue were subjected to SDS PAGE followed by western blot with 67226-1-Ig (DUOX1 antibody) at dilution of 1:2000 incubated at room temperature for 1.5 hours. This data was developed using the same antibody clone with 67226-1-PBS in a different storage buffer formulation.



human placenta tissue were subjected to SDS PAGE followed by western blot with 67226-1-Ig (DUOX1 antibody) at dilution of 1:2000 incubated at room temperature for 1.5 hours. This data was developed using the same antibody clone with 67226-1-PBS in a different storage buffer formulation.



Immunofluorescent analysis of (4% PFA) fixed mouse stomach tissue using DUOX1 antibody (67226-1-Ig, Clone: 3B8D6 ) at dilution of 1:400 and CoraLite®488-Conjugated AffiniPure Goat Anti-Mouse IgG(H+L). This data was developed using the same antibody clone with 67226-1-PBS in a different storage buffer formulation.