

For Research Use Only

CD300A Monoclonal antibody

Catalog Number: 67242-1-Ig



Basic Information

Catalog Number: 67242-1-Ig	GenBank Accession Number: BC032352	Purification Method: Protein G purification
Size: 150ul , Concentration: 1700 µg/ml by Nanodrop and 1000 µg/ml by Bradford method using BSA as the standard;	GeneID (NCBI): 11314	CloneNo.: 2F9C5
Source: Mouse	Full Name: CD300a molecule	Recommended Dilutions: WB 1:1000-1:4000
Isotype: IgG1	Calculated MW: 299 aa, 33 kDa	
Immunogen Catalog Number: AG5776	Observed MW: 50-60 kDa	

Applications

Tested Applications: FC, WB, ELISA	Positive Controls: WB : THP-1 cells, HL-60 cells, human spleen tissue, Jurkat cells, K-562 cells, Raji cells
Species Specificity: Human	

Background Information

Storage

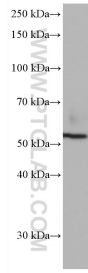
Storage:
Store at -20°C. Stable for one year after shipment.
Storage Buffer:
PBS with 0.02% sodium azide and 50% glycerol pH 7.3.
Aliquoting is unnecessary for -20°C storage

*** 20ul sizes contain 0.1% BSA

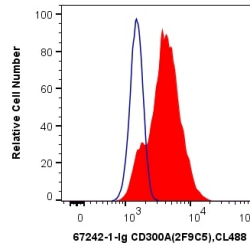
For technical support and original validation data for this product please contact:
T: 1 (888) 4PTGLAB (1-888-478-4522) (toll free in USA), or 1(312) 455-8498 (outside USA)
E: proteintech@ptglab.com
W: ptglab.com

This product is exclusively available under Proteintech Group brand and is not available to purchase from any other manufacturer.

Selected Validation Data



THP-1 cells were subjected to SDS PAGE followed by western blot with 67242-1-Ig (CD300A antibody) at dilution of 1:2000 incubated at room temperature for 1.5 hours.



1×10^6 THP-1 cells were surface stained with 0.4 ug Anti-Human CD300A (67242-1-Ig, Clone:2F9C5) and CoraLite®488-Conjugated AffiniPure Goat Anti-Mouse IgG(H+L) at dilution 1:1000 (red), or 0.4 ug Control Antibody. Cells were not fixed.