

For Research Use Only

# CD300a Monoclonal antibody, PBS Only (Detector)

Catalog Number: 67242-1-PBS



## Basic Information

<b>Catalog Number:</b> 67242-1-PBS	<b>GenBank Accession Number:</b> BC032352	<b>Purification Method:</b> Protein G purification
<b>Size:</b> 100ug , Concentration: 1 mg/ml by Nanodrop;	<b>GeneID (NCBI):</b> 11314	<b>CloneNo.:</b> 2F9C5
<b>Source:</b> Mouse	<b>UNIPROT ID:</b> Q9UGN4	
<b>Isotype:</b> IgG1	<b>Full Name:</b> CD300a molecule	
<b>Immunogen Catalog Number:</b> AG5776	<b>Calculated MW:</b> 299 aa, 33 kDa	
	<b>Observed MW:</b> 50-60 kDa	

## Applications

**Tested Applications:**  
WB, Cytometric bead array, Indirect ELISA

**Species Specificity:**  
human

## Product Information

67242-1-PBS targets CD300a as part of a matched antibody pair:

MP50466-1: 67242-2-PBS capture and 67242-1-PBS detection (validated in Cytometric bead array)

Unconjugated mouse monoclonal antibody pair in PBS only (BSA and azide free) storage buffer at a concentration of 1 mg/mL, ready for conjugation.

This conjugation ready format makes antibodies ideal for use in many applications including: ELISAs, multiplex assays requiring matched pairs, mass cytometry, and multiplex imaging applications. Antibody use should be optimized by the end user for each application and assay.

## Storage

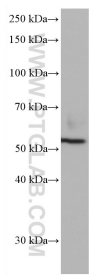
**Storage:**  
Store at -80°C.

**Storage Buffer:**  
PBS only, pH7.3

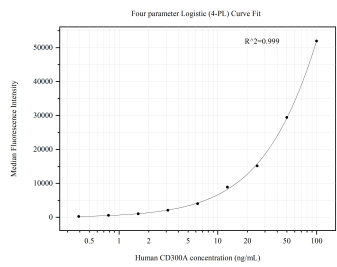
For technical support and original validation data for this product please contact:  
T: 1 (888) 4PTGLAB (1-888-478-4522) (toll free in USA), or 1(312) 455-8498 (outside USA)  
E: [proteintech@ptglab.com](mailto:proteintech@ptglab.com)  
W: [ptglab.com](http://ptglab.com)

This product is exclusively available under Proteintech Group brand and is not available to purchase from any other manufacturer.

Selected Validation Data



THP-1 cells were subjected to SDS PAGE followed by western blot with 67242-1-Ig (CD300A antibody) at dilution of 1:2000 incubated at room temperature for 1.5 hours. This data was developed using the same antibody clone with 67242-1-PBS in a different storage buffer formulation.



Cytometric bead array standard curve of MP50466-1, CD300A Monoclonal Matched Antibody Pair, PBS Only. Capture antibody: 67242-2-PBS. Detection antibody: 67242-1-PBS. Standard:Ag5776. Range: 0.391-100 ng/mL