

For Research Use Only

SERCA2/ATP2A2 Monoclonal antibody

Catalog Number: 67248-1-Ig **13 Publications**



Basic Information

Catalog Number: 67248-1-Ig	GenBank Accession Number: BC035588	Purification Method: Protein G purification
Size: 150ul, Concentration: 1000 µg/ml by Nanodrop and 601 µg/ml by Bradford method using BSA as the standard;	GeneID (NCBI): 488	CloneNo.: 1F11A11
Source: Mouse	UNIPROT ID: P16615	Recommended Dilutions: WB 1:3000-1:20000 IHC 1:250-1:1000
Isotype: IgG1	Full Name: ATPase, Ca++ transporting, cardiac muscle, slow twitch 2	
Immunogen Catalog Number: AG5052	Calculated MW: 1042 aa, 115 kDa	
	Observed MW: 120 kDa	

Applications

Tested Applications: WB, IHC, ELISA	Positive Controls:
Cited Applications: WB, IHC, IF	WB : HEK-293 cells, HepG2 cells, MCF-7 cells, HSC-T6 cells, NIH/3T3 cells
Species Specificity: human, mouse, rat	IHC : human urothelial carcinoma tissue, mouse skeletal muscle tissue
Cited Species: human, mouse, rat	
Note-IHC: suggested antigen retrieval with TE buffer pH 9.0; (*) Alternatively, antigen retrieval may be performed with citrate buffer pH 6.0	

Background Information

ATP2A2, also known as SERCA2 (Sarco/endoplasmic reticulum-type calcium transport ATPase 2), is a 110 kDa magnesium-dependent enzyme catalyzing the hydrolysis of ATP coupled with the translocation of calcium from the cytosol to the sarcoplasmic reticulum lumen. Human SERCA2 gene gives rise to several alternatively spliced isoforms: SERCA2a, SERCA2b and SERCA2c. ATP2A2 is mainly expressed in the sarcoplasmic reticulum of muscle cells and the endoplasmic reticulum of most cell types.

Notable Publications

Author	Pubmed ID	Journal	Application
Yu Chen	34592660	Cell Calcium	WB
Huan Wei	25200835	J Cell Physiol	WB
Jin-Young Yoon	35872650	Clin Transl Med	WB

Storage

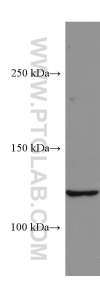
Storage:
Store at -20°C. Stable for one year after shipment.
Storage Buffer:
PBS with 0.02% sodium azide and 50% glycerol pH 7.3.
Aliquoting is unnecessary for -20°C storage

*** 20ul sizes contain 0.1% BSA

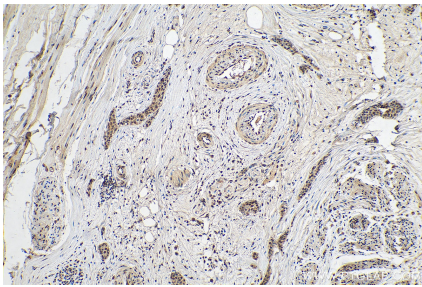
For technical support and original validation data for this product please contact:
T: 1 (888) 4PTGLAB (1-888-478-4522) (toll free in USA), or 1(312) 455-8498 (outside USA)
E: proteintech@ptglab.com
W: ptglab.com

This product is exclusively available under Proteintech Group brand and is not available to purchase from any other manufacturer.

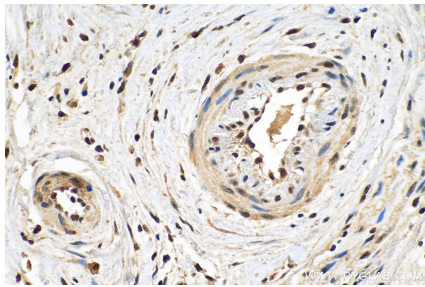
Selected Validation Data



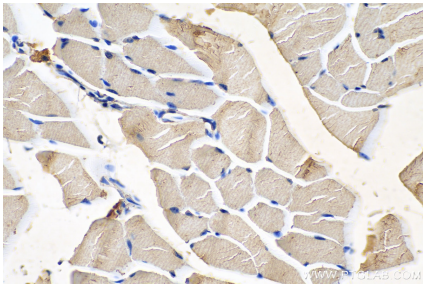
HEK-293 cells were subjected to SDS PAGE followed by western blot with 67248-1-Ig (SERCA2,ATP2A2 antibody) at dilution of 1:10000 incubated at room temperature for 1.5 hours.



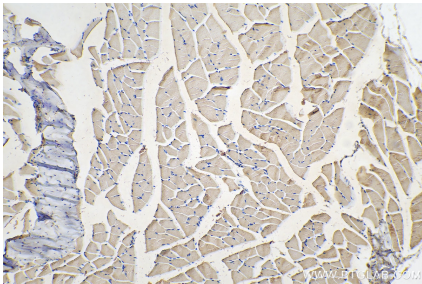
Immunohistochemical analysis of paraffin-embedded human urothelial carcinoma tissue slide using 67248-1-Ig (SERCA2,ATP2A2 antibody) at dilution of 1:500 (under 10x lens). Heat mediated antigen retrieval with Tris-EDTA buffer (pH 9.0).



Immunohistochemical analysis of paraffin-embedded human urothelial carcinoma tissue slide using 67248-1-Ig (SERCA2,ATP2A2 antibody) at dilution of 1:500 (under 40x lens). Heat mediated antigen retrieval with Tris-EDTA buffer (pH 9.0).



Immunohistochemical analysis of paraffin-embedded mouse skeletal muscle tissue slide using 67248-1-Ig (SERCA2,ATP2A2 antibody) at dilution of 1:500 (under 40x lens). Heat mediated antigen retrieval with Tris-EDTA buffer (pH 9.0).



Immunohistochemical analysis of paraffin-embedded mouse skeletal muscle tissue slide using 67248-1-Ig (SERCA2,ATP2A2 antibody) at dilution of 1:500 (under 10x lens). Heat mediated antigen retrieval with Tris-EDTA buffer (pH 9.0).