

For Research Use Only

P glycoprotein Monoclonal antibody

Catalog Number: 67258-2-Ig



Basic Information

Catalog Number: 67258-2-Ig	GenBank Accession Number: BC130424	Purification Method: Protein G purification
Size: 150ul , Concentration: 1000 µg/ml by Nanodrop;	GeneID (NCBI): 5243	CloneNo.: 1G6C2
Source: Mouse	Full Name: ATP-binding cassette, sub-family B (MDR/TAP), member 1	Recommended Dilutions: WB 1:1000-1:6000 IHC 1:1000-1:4000
Isotype: IgG1	Calculated MW: 1280 aa, 142 kDa	
Immunogen Catalog Number: AG17811	Observed MW: 130-150 kDa	

Applications

Tested Applications:
IHC, WB, ELISA

Species Specificity:
Human

Note-IHC: suggested antigen retrieval with TE buffer pH 9.0; (*) Alternatively, antigen retrieval may be performed with citrate buffer pH 6.0

Positive Controls:

WB : unboiled HeLa cells, unboiled HepG2 cells, SH-SY5Y cells

IHC : human kidney tissue,

Background Information

ABCB1 (also known as P-gp/ P-glycoprotein, MDR1/multidrug-resistance 1) is a plasma membrane protein first discovered in multidrug resistant tumor cells. ABCB1 can extrude a large number of medically relevant compounds from cells and causes drug resistance. ABCB1 is expressed in a variety of human cancers as well as normal tissues including brain, and placenta. Overexpression of ABCB1 correlates with a negative prognosis in several types of cancer. For optimal WB detection, we recommend to avoid boiling the sample after lysis.

Storage

Storage:

Store at -20°C. Stable for one year after shipment.

Storage Buffer:

PBS with 0.02% sodium azide and 50% glycerol pH 7.3.

Aliquoting is unnecessary for -20°C storage

*** 20ul sizes contain 0.1% BSA

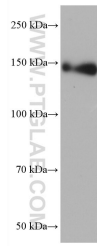
For technical support and original validation data for this product please contact:

T: 1 (888) 4PTGLAB (1-888-478-4522) (toll free in USA), or 1(312) 455-8498 (outside USA)

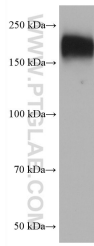
E: proteintech@ptglab.com
W: ptglab.com

This product is exclusively available under Proteintech Group brand and is not available to purchase from any other manufacturer.

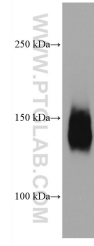
Selected Validation Data



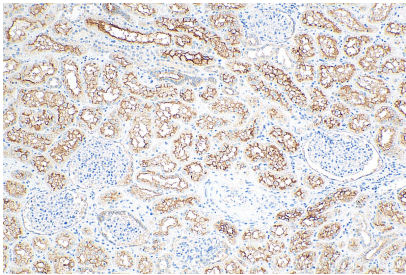
unboiled HeLa cells were subjected to SDS PAGE followed by western blot with 67258-2-Ig (ABCB1 antibody) at dilution of 1:3000 incubated at room temperature for 1.5 hours.



SH-SY5Y cells were subjected to SDS PAGE followed by western blot with 67258-2-Ig (ABCB1 antibody) at dilution of 1:3000 incubated at room temperature for 1.5 hours.



unboiled HepG2 cells were subjected to SDS PAGE followed by western blot with 67258-2-Ig (ABCB1 antibody) at dilution of 1:10000 incubated at room temperature for 1.5 hours.



Immunohistochemical analysis of paraffin-embedded human kidney tissue slide using 67258-2-Ig (ABCB1 antibody) at dilution of 1:2000 (under 10x lens). Heat mediated antigen retrieval with Tris-EDTA buffer (pH 9.0).