

For Research Use Only

P glycoprotein Monoclonal antibody, PBS Only

Catalog Number: 67258-2-PBS



Basic Information

Catalog Number: 67258-2-PBS	GenBank Accession Number: BC130424	Purification Method: Protein G purification
Size: 100ug , Concentration: 1mg/ml by Nanodrop;	GeneID (NCBI): 5243	CloneNo.: 1G6C2
Source: Mouse	UNIPROT ID: P08183	
Isotype: IgG1	Full Name: ATP-binding cassette, sub-family B (MDR/TAP), member 1	
Immunogen Catalog Number: AG17811	Calculated MW: 1280 aa, 142 kDa	
	Observed MW: 130-150 kDa	

Applications

Tested Applications:
WB, IHC, IF/ICC, Indirect ELISA

Species Specificity:
human

Background Information

ABCB1 (also known as P-gp/ P-glycoprotein, MDR1/multidrug-resistance 1) is a plasma membrane protein first discovered in multidrug resistant tumor cells. ABCB1 can extrude a large number of medically relevant compounds from cells and causes drug resistance. ABCB1 is expressed in a variety of human cancers as well as normal tissues including brain, and placenta. Overexpression of ABCB1 correlates with a negative prognosis in several types of cancer. For optimal WB detection, we recommend to avoid boiling the sample after lysis.

Storage

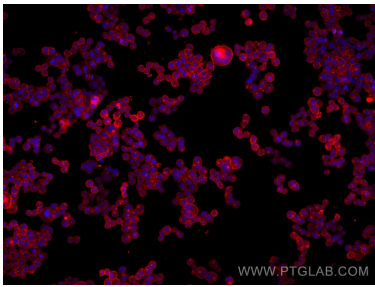
Storage:
Store at -80°C.

Storage Buffer:
PBS Only

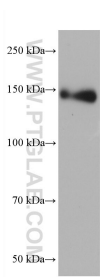
For technical support and original validation data for this product please contact:
T: 1 (888) 4PTGLAB (1-888-478-4522) (toll free in USA), or 1(312) 455-8498 (outside USA)
E: proteintech@ptglab.com
W: ptglab.com

This product is exclusively available under Proteintech Group brand and is not available to purchase from any other manufacturer.

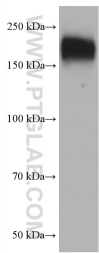
Selected Validation Data



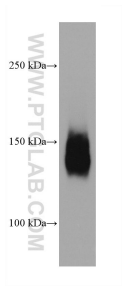
Immunofluorescent analysis of (4% PFA) fixed COLO 320 cells using P glycoprotein antibody (67258-2-Ig, Clone: 1G6C2) at dilution of 1:1000 and Multi-rAb CoraLite® Plus 594-Goat Anti-Mouse Recombinant Secondary Antibody (H+L) (Cat.NO. RGAM004). This data was developed using the same antibody clone with 67258-2-PBS in a different storage buffer formulation.



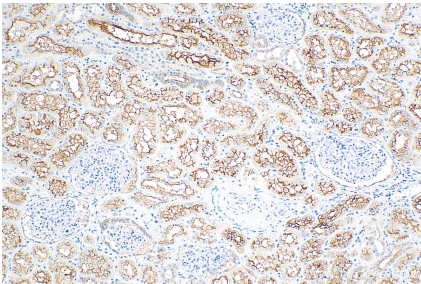
unboiled HeLa cells were subjected to SDS PAGE followed by western blot with 67258-2-Ig (ABCB1 antibody) at dilution of 1:3000 incubated at room temperature for 1.5 hours. This data was developed using the same antibody clone with 67258-2-PBS in a different storage buffer formulation.



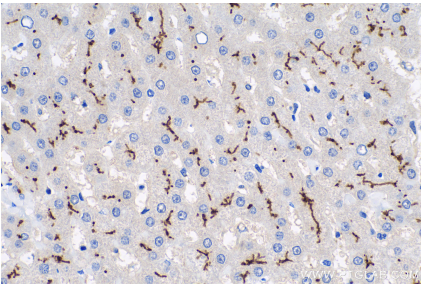
SH-SY5Y cells were subjected to SDS PAGE followed by western blot with 67258-2-Ig (ABCB1 antibody) at dilution of 1:3000 incubated at room temperature for 1.5 hours. This data was developed using the same antibody clone with 67258-2-PBS in a different storage buffer formulation.



unboiled HepG2 cells were subjected to SDS PAGE followed by western blot with 67258-2-Ig (ABCB1 antibody) at dilution of 1:10000 incubated at room temperature for 1.5 hours. This data was developed using the same antibody clone with 67258-2-PBS in a different storage buffer formulation.



Immunohistochemical analysis of paraffin-embedded human kidney tissue slide using 67258-2-Ig (ABCB1 antibody) at dilution of 1:2000 (under 10x lens). Heat mediated antigen retrieval with Tris-EDTA buffer (pH 9.0). This data was developed using the same antibody clone with 67258-2-PBS in a different storage buffer formulation.



Immunohistochemical analysis of paraffin-embedded human liver tissue slide using 67258-2-Ig (ABCB1 antibody) at dilution of 1:16000 (under 40x lens). Heat mediated antigen retrieval with Tris-EDTA buffer (pH 9.0). This data was developed using the same antibody clone with 67258-2-PBS in a different storage buffer formulation.