

BCR Monoclonal antibody

Catalog Number: 67260-1-Ig

Basic Information

Catalog Number: 67260-1-Ig	GenBank Accession Number: BC066122	Purification Method: Protein A purification
Size: 150ul , Concentration: 1600 µg/ml by Nanodrop and 1000 µg/ml by Bradford method using BSA as the standard;	GeneID (NCBI): 613	CloneNo.: 2C2E3
Source: Mouse	Full Name: breakpoint cluster region	Recommended Dilutions: WB 1:2000-1:10000
Isotype: IgG2b	Calculated MW: 143 kDa	
Immunogen Catalog Number: AG28953	Observed MW: 150-160 kDa	

Applications

Tested Applications: FC, WB, ELISA	Positive Controls:
Species Specificity: Human, rat	WB : Jurkat cells, HEK-293 cells, HeLa cells

Background Information

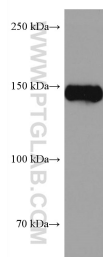
The Bcr gene, mapping on chromosome22, was originally identified by its presence in the chimeric Bcr-Abl oncogene. The Bcr gene encodes for the break point cluster region protein(Bcr). Although the BCR-ABL fusion protein has been extensively studied, the function of the normal BCR gene product is not clear. The protein has serine/threonine kinase activity and is a GTPase-activating protein for RAC1 and CDC42. A chromosomal aberration involving BCR has been found in patients with chronic myeloid leukemia.

Storage

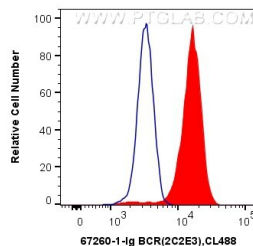
Storage:
Store at -20°C. Stable for one year after shipment.
Storage Buffer:
PBS with 0.02% sodium azide and 50% glycerol pH 7.3.
Aliquoting is unnecessary for -20°C storage

*** 20ul sizes contain 0.1% BSA

Selected Validation Data



Jurkat cells were subjected to SDS PAGE followed by western blot with 67260-1-Ig (BCR antibody) at dilution of 1:5000 incubated at room temperature for 1.5 hours.



1X10⁶ K-562 cells were intracellularly stained with 0.4 ug Anti-Human BCR (67260-1-Ig, Clone:2C2E3) and CoraLite®488-Conjugated AffiniPure Goat Anti-Mouse IgG(H+L) at dilution 1:1000 (red), or 0.4 ug Mouse IgG2b Isotype Control (66360-3-Ig, Clone: K11B8C4B5) (blue). Cells were fixed with 4% PFA and permeabilized with Flow Cytometry Perm Buffer (PF00011-C).