

For Research Use Only

# LAMC3-Specific Monoclonal antibody, PBS Only (Capture)

Catalog Number: 67261-1-PBS



## Basic Information

<b>Catalog Number:</b> 67261-1-PBS	<b>GenBank Accession Number:</b> NM_006059	<b>Purification Method:</b> Protein A purification
<b>Size:</b> 100ug , Concentration: 1mg/ml by Nanodrop;	<b>GeneID (NCBI):</b> 10319	<b>CloneNo.:</b> 4B8C5
<b>Source:</b> Mouse	<b>UNIPROT ID:</b> Q9Y6N6	
<b>Isotype:</b> IgG2a	<b>Full Name:</b> laminin, gamma 3	
<b>Immunogen Catalog Number:</b> AG19568	<b>Calculated MW:</b> 1575 aa, 171 kDa	
	<b>Observed MW:</b> 180-200 kDa	

## Applications

**Tested Applications:**  
WB, IF-P, Cytometric bead array, Indirect ELISA

**Species Specificity:**  
human, mouse

## Product Information

67261-1-PBS targets LAMC3-Specific as part of a matched antibody pair:

MP51059-1: 67261-1-PBS capture and 67261-2-PBS detection (validated in Cytometric bead array)

Unconjugated mouse monoclonal antibody pair in PBS only (BSA and azide free) storage buffer at a concentration of 1 mg/mL, ready for conjugation.

This conjugation ready format makes antibodies ideal for use in many applications including: ELISAs, multiplex assays requiring matched pairs, mass cytometry, and multiplex imaging applications. Antibody use should be optimized by the end user for each application and assay.

## Storage

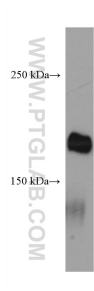
**Storage:**  
Store at -80°C.

**Storage Buffer:**  
PBS only, pH7.3

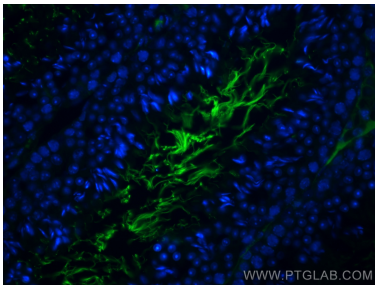
For technical support and original validation data for this product please contact:  
T: 1 (888) 4PTGLAB (1-888-478-4522) (toll free in USA), or 1(312) 455-8498 (outside USA)  
E: [proteintech@ptglab.com](mailto:proteintech@ptglab.com)  
W: [ptglab.com](http://ptglab.com)

This product is exclusively available under Proteintech Group brand and is not available to purchase from any other manufacturer.

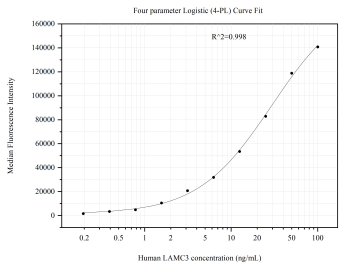
Selected Validation Data



human testis tissue were subjected to SDS PAGE followed by western blot with 67261-1-Ig (LAMC3-Specific antibody) at dilution of 1:1500 incubated at room temperature for 1.5 hours. This data was developed using the same antibody clone with 67261-1-PBS in a different storage buffer formulation.



Immunofluorescent analysis of (4% PFA) fixed mouse testis tissue using LAMC3-Specific antibody (67261-1-Ig, Clone: 4B8C5 ) at dilution of 1:400 and CoraLite®488-Conjugated AffiniPure Goat Anti-Mouse IgG(H+L). This data was developed using the same antibody clone with 67261-1-PBS in a different storage buffer formulation.



Cytometric bead array standard curve of MP51059-1, LAMC3-Specific Monoclonal Matched Antibody Pair, PBS Only. Capture antibody: 67261-1-PBS. Detection antibody: 67261-2-PBS. Standard:Ag19568. Range: 0.195-100 ng/mL