

For Research Use Only

CYP11A1 Monoclonal antibody

Catalog Number: 67264-1-Ig

Featured Product

6 Publications



Basic Information

Catalog Number:

67264-1-Ig

Size:

150ul, Concentration: 1000 ug/ml by Nanodrop and 500 ug/ml by Bradford method using BSA as the standard;

Source:

Mouse

Isotype:

IgG1

Immunogen Catalog Number:

AG4353

GenBank Accession Number:

BC032329

GeneID (NCBI):

1583

UNIPROT ID:

P05108

Full Name:

cytochrome P450, family 11, subfamily A, polypeptide 1

Calculated MW:

521 aa, 60 kDa

Observed MW:

49-52 kDa

Purification Method:

Protein A purification

CloneNo.:

1C5D5

Recommended Dilutions:

WB 1:5000-1:50000

IHC 1:500-1:2000

Applications

Tested Applications:

WB, IHC, ELISA

Cited Applications:

WB, IHC

Species Specificity:

human, mouse, rat

Cited Species:

human, mouse, rat

Note-IHC: suggested antigen retrieval with TE buffer pH 9.0; (*) Alternatively, antigen retrieval may be performed with citrate buffer pH 6.0

Positive Controls:

WB: LNCaP cells, HepG2 cells, SiHa cells, HeLa cells, Caco-2 cells. human placenta tissue, human testis tissue, rat testis tissue, mouse testis tissue

IHC: human placenta tissue,

Notable Publications

| Author | Pubmed ID | Journal | Application |
|--------------|-----------|----------------|-------------|
| Haibo Zhang | 34671938 | Reprod Sci | IHC |
| Tianying Pan | 35002603 | Front Neurosci | WB |
| Maria Höfner | 38128016 | Mol Hum Reprod | WB |

Storage

Storage:

Store at -20°C. Stable for one year after shipment.

Storage Buffer:

PBS with 0.02% sodium azide and 50% glycerol pH 7.3.

Aliquoting is unnecessary for -20°C storage

*** 20ul sizes contain 0.1% BSA

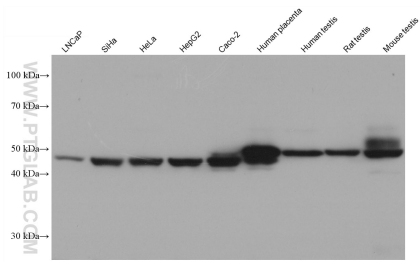
For technical support and original validation data for this product please contact:

T: 1 (888) 4PTGLAB (1-888-478-4522) (toll free in USA), or 1(312) 455-8498 (outside USA)

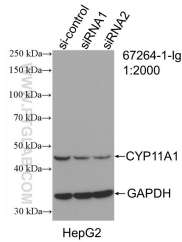
E: proteintech@ptglab.com
W: ptglab.com

This product is exclusively available under Proteintech Group brand and is not available to purchase from any other manufacturer.

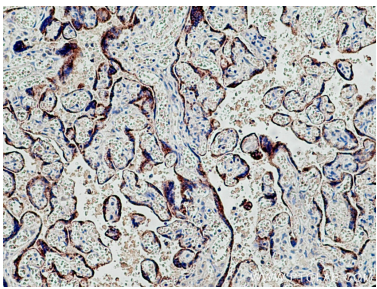
Selected Validation Data



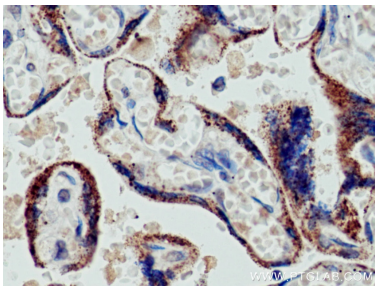
Various lysates were subjected to SDS PAGE followed by western blot with 67264-1-Ig (CYP11A1 antibody) at dilution of 1:20000 incubated at room temperature for 1.5 hours.



WB result of CYP11A1 antibody (67264-1-Ig; 1:2000; incubated at room temperature for 1.5 hours) with sh-Control and sh-CYP11A1 transfected HepG2 cells.



Immunohistochemical analysis of paraffin-embedded human placenta tissue slide using 67264-1-Ig (CYP11A1 antibody) at dilution of 1:1000 (under 10x lens). Heat mediated antigen retrieval with Tris-EDTA buffer (pH 9.0).



Immunohistochemical analysis of paraffin-embedded human placenta tissue slide using 67264-1-Ig (CYP11A1 antibody) at dilution of 1:1000 (under 40x lens). Heat mediated antigen retrieval with Tris-EDTA buffer (pH 9.0).