

For Research Use Only

KRAS-4A-specific Monoclonal antibody

Catalog Number: 67266-1-Ig



Basic Information

Catalog Number:

67266-1-Ig

GenBank Accession Number:

NM_033360

Purification Method:

Protein A purification

Size:

150ul, Concentration: 1700 ug/ml by 3845
Nanodrop and 1000 ug/ml by Bradford
method using BSA as the standard;

GeneID (NCBI):

3845

CloneNo.:

3C8F5

Source:

Mouse

UNIPROT ID:

P01116

Recommended Dilutions:

WB 1:1000-1:5000

IF/ICC 1:50-1:500

Isotype:

IgG2a

Full Name:

v-Ki-ras2 Kirsten rat sarcoma viral
oncogene homolog

Calculated MW:

21 kDa

Observed MW:

22 kDa

Applications

Tested Applications:

WB, IF/ICC, ELISA

Positive Controls:

WB : HeLa cells, HEK-293 cells, MCF-7 cells, SH-SY5Y
cells, PC-12 cells, Neuro-2a cells

Species Specificity:

human, mouse, rat, pig

IF/ICC : HeLa cells,

Background Information

RAS (derived from 'Rat Sarcoma' virus) gene family includes KRAS, HRAS, and NRAS. These genes encode very similar 21 kDa proteins and are homologs of rodent sarcoma virus genes that have transforming abilities. KRAS has two isoforms, 4A and 4B. This antibody is specific for KRAS-4A, which is also named as KRAS-2A.

Storage

Storage:

Store at -20°C. Stable for one year after shipment.

Storage Buffer:

PBS with 0.02% sodium azide and 50% glycerol pH 7.3.

Aliquoting is unnecessary for -20°C storage

*** 20ul sizes contain 0.1% BSA

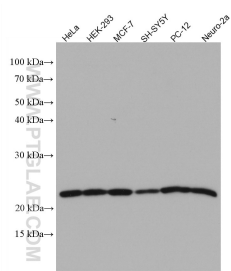
For technical support and original validation data for this product please contact:

T: 1 (888) 4PTGLAB (1-888-478-4522) (toll free
in USA), or 1(312) 455-8498 (outside USA)

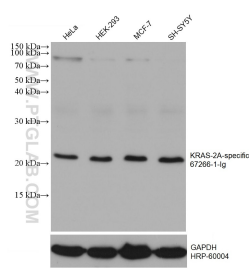
E: proteintech@ptglab.com
W: ptglab.com

This product is exclusively available under Proteintech
Group brand and is not available to purchase from any
other manufacturer.

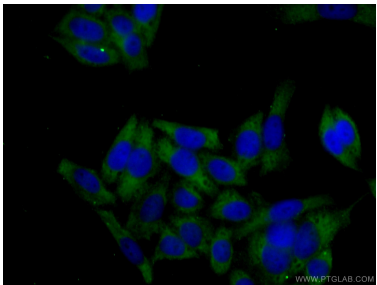
Selected Validation Data



Various lysates were subjected to SDS PAGE followed by western blot with 67266-1-Ig (KRAS-2A-specific antibody) at dilution of 1:3000 incubated at room temperature for 1.5 hours.



Various lysates were subjected to SDS PAGE followed by western blot with 67266-1-Ig (KRAS-2A-specific antibody) at dilution of 1:3000 incubated at room temperature for 1.5 hours. The membrane was stripped and reblotted with HRP-conjugated GAPDH Monoclonal antibody (HRP-60004) as loading control.



Immunofluorescent analysis of (-20°C Ethanol) fixed HeLa cells using 67266-1-Ig (KRAS-2A-specific antibody) at dilution of 1:100 and CoraLite488-Conjugated AffiniPure Goat Anti-Mouse IgG(H+L).