

For Research Use Only

VANGL2 Monoclonal antibody

Catalog Number: 67273-1-Ig

Featured Product

1 Publications



Basic Information

Catalog Number:

67273-1-Ig

Size:

150ul, Concentration: 2200 ug/ml by Nanodrop and 1000 ug/ml by Bradford method using BSA as the standard;

Source:

Mouse

Isotype:

IgG3

Immunogen Catalog Number:

AG16980

GenBank Accession Number:

BC103920

GeneID (NCBI):

57216

UNIPROT ID:

Q9ULK5

Full Name:

vang-Like 2 (van gogh, Drosophila)

Calculated MW:

521 aa, 60 kDa

Observed MW:

60 kDa

Purification Method:

Protein A purification

CloneNo.:

1B2C1

Recommended Dilutions:

WB 1:1000-1:6000

Applications

Tested Applications:

WB, ELISA

Cited Applications:

WB

Species Specificity:

Human

Cited Species:

hamster

Positive Controls:

WB : MCF-7 cells, HepG2 cells, HeLa cells

Background Information

Vangl2 is a key component of the planar cell polarity (PCP) pathway. Vangl2 is tightly associated with the postsynaptic density (PSD) fraction and forms a protein complex with PSD-95 and NMDA receptors. Vangl2 directly binds to the third PDZ domain of PSD-95 via its C-terminal TSV motif. Vangl2 directly binds to N-cadherin.

Notable Publications

Author	Pubmed ID	Journal	Application
Hu Tao	36288764	Biochim Biophys Acta Gene Regul Mech	WB

Storage

Storage:

Store at -20°C. Stable for one year after shipment.

Storage Buffer:

PBS with 0.02% sodium azide and 50% glycerol pH 7.3.

Aliquoting is unnecessary for -20°C storage

*** 20ul sizes contain 0.1% BSA

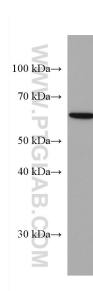
For technical support and original validation data for this product please contact:

T: 1 (888) 4PTGLAB (1-888-478-4522) (toll free in USA), or 1(312) 455-8498 (outside USA)

E: proteintech@ptglab.com
W: ptglab.com

This product is exclusively available under Proteintech Group brand and is not available to purchase from any other manufacturer.

Selected Validation Data



MCF-7 cells were subjected to SDS PAGE followed by western blot with 67273-1-Ig (VANGL2 antibody) at dilution of 1:3000 incubated at room temperature for 1.5 hours.