

For Research Use Only

WWP2 Monoclonal antibody

Catalog Number: 67274-1-Ig **1 Publications**



Basic Information

Catalog Number: 67274-1-Ig	GenBank Accession Number: BC013645	Purification Method: Protein A purification
Size: 150ul , Concentration: 2100 µg/ml by Nanodrop and 1000 µg/ml by Bradford method using BSA as the standard;	GeneID (NCBI): 11060	CloneNo.: 2C9B4
Source: Mouse	Full Name: WW domain containing E3 ubiquitin protein ligase 2	Recommended Dilutions: WB 1:500-1:2000 IHC 1:50-1:500
Isotype: IgG1	Calculated MW: 870 aa, 99 kDa	
Immunogen Catalog Number: AG2835	Observed MW: 100-115 kDa	

Applications

Tested Applications:
IHC, WB, ELISA

Cited Applications:
WB

Species Specificity:
Human, Rat

Cited Species:
human

Note-IHC: suggested antigen retrieval with TE buffer pH 9.0; (*) Alternatively, antigen retrieval may be performed with citrate buffer pH 6.0

Positive Controls:

WB : HEK-293 cells, LNCap cells, MCF-7 cells, K-562 cells, HSC-T6 cells

IHC : human pancreas cancer tissue,

Background Information

WWP2 (WW domain-containing protein 2) is also named as AIP2 and belongs to the NEDD4-like protein family. It functions as an E3 ubiquitin ligase for PTEN that plays a vital role in tumour-cell survival and is also involved in regulating transcription, embryonic stem-cell fate, cellular transport and T-cell activation processes (PMID:21532586). WWP2, which specifically interacted with ES cell-specific transcription factor Oct-4 and promoted its ubiquitination both in vitro and in vivo, is a ubiquitously expressed protein and exists in both cytoplasmic and nuclear compartments in ES cells (PMID:15047715).

Notable Publications

Author	Pubmed ID	Journal	Application
Liang Xu	38200519	J Exp Clin Cancer Res	WB

Storage

Storage:

Store at -20°C.

Storage Buffer:

PBS with 0.02% sodium azide and 50% glycerol pH 7.3.

Aliquoting is unnecessary for -20°C storage

***** 20ul sizes contain 0.1% BSA**

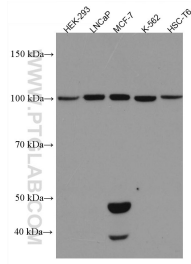
For technical support and original validation data for this product please contact:

T: 1 (888) 4PTGLAB (1-888-478-4522) (toll free in USA), or 1(312) 455-8498 (outside USA)

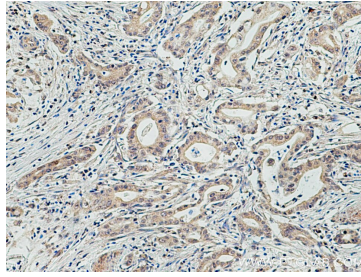
E: proteintech@ptglab.com
W: ptglab.com

This product is exclusively available under Proteintech Group brand and is not available to purchase from any other manufacturer.

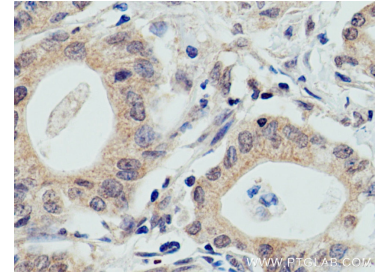
Selected Validation Data



Various lysates were subjected to SDS PAGE followed by western blot with 67274-1-Ig (WWP2 antibody) at dilution of 1:1000 incubated at room temperature for 1.5 hours.



Immunohistochemical analysis of paraffin-embedded human pancreas cancer tissue slide using 67274-1-Ig (WWP2 antibody) at dilution of 1:200 (under 10x lens). Heat mediated antigen retrieval with Tris-EDTA buffer (pH 9.0).



Immunohistochemical analysis of paraffin-embedded human pancreas cancer tissue slide using 67274-1-Ig (WWP2 antibody) at dilution of 1:200 (under 40x lens). Heat mediated antigen retrieval with Tris-EDTA buffer (pH 9.0).