

For Research Use Only

# WWP2 Monoclonal antibody, PBS Only



Catalog Number: 67274-1-PBS

## Basic Information

<b>Catalog Number:</b> 67274-1-PBS	<b>GenBank Accession Number:</b> BC013645	<b>Purification Method:</b> Protein G purification
<b>Size:</b> 100ug , Concentration: 1 mg/ml by Nanodrop;	<b>GeneID (NCBI):</b> 11060	<b>CloneNo.:</b> 2C9B4
<b>Source:</b> Mouse	<b>UNIPROT ID:</b> O00308	
<b>Isotype:</b> IgG1	<b>Full Name:</b> WW domain containing E3 ubiquitin protein ligase 2	
<b>Immunogen Catalog Number:</b> AG2835	<b>Calculated MW:</b> 870 aa, 99 kDa	
	<b>Observed MW:</b> 100-115 kDa	

## Applications

**Tested Applications:**  
WB, IHC, Indirect ELISA

**Species Specificity:**  
Human, Rat

## Background Information

WWP2 (WW domain-containing protein 2) is also named as AIP2 and belongs to the NEDD4-like protein family. It functions as an E3 ubiquitin ligase for PTEN that plays a vital role in tumour-cell survival and is also involved in regulating transcription, embryonic stem-cell fate, cellular transport and T-cell activation processes (PMID:21532586). WWP2, which specifically interacted with ES cell-specific transcription factor Oct-4 and promoted its ubiquitination both in vitro and in vivo, is a ubiquitously expressed protein and exists in both cytoplasmic and nuclear compartments in ES cells (PMID:15047715).

## Storage

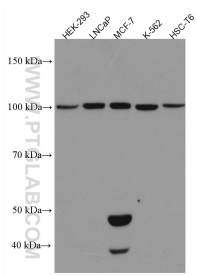
**Storage:**  
Store at -80°C.

**Storage Buffer:**  
PBS Only

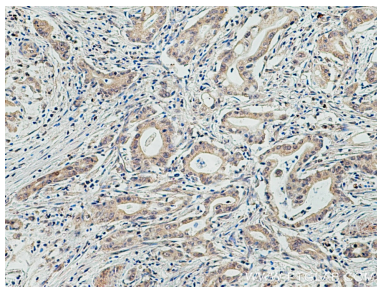
For technical support and original validation data for this product please contact:  
T: 1 (888) 4PTGLAB (1-888-478-4522) (toll free in USA), or 1(312) 455-8498 (outside USA)  
E: [proteintech@ptglab.com](mailto:proteintech@ptglab.com)  
W: [ptglab.com](http://ptglab.com)

This product is exclusively available under Proteintech Group brand and is not available to purchase from any other manufacturer.

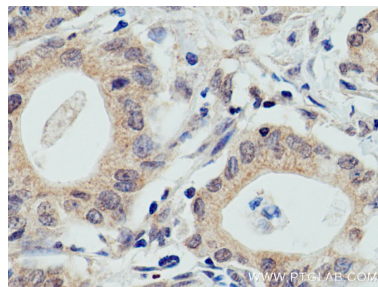
## Selected Validation Data



Various lysates were subjected to SDS PAGE followed by western blot with 67274-1-Ig (WWP2 antibody) at dilution of 1:1000 incubated at room temperature for 1.5 hours. This data was developed using the same antibody clone with 67274-1-PBS in a different storage buffer formulation.



Immunohistochemical analysis of paraffin-embedded human pancreas cancer tissue slide using 67274-1-Ig (WWP2 antibody) at dilution of 1:200 (under 10x lens). Heat mediated antigen retrieval with Tris-EDTA buffer (pH 9.0). This data was developed using the same antibody clone with 67274-1-PBS in a different storage buffer formulation.



Immunohistochemical analysis of paraffin-embedded human pancreas cancer tissue slide using 67274-1-Ig (WWP2 antibody) at dilution of 1:200 (under 40x lens). Heat mediated antigen retrieval with Tris-EDTA buffer (pH 9.0). This data was developed using the same antibody clone with 67274-1-PBS in a different storage buffer formulation.