

For Research Use Only

Glucagon Monoclonal antibody

Catalog Number: 67286-1-Ig **9 Publications**



Basic Information

Catalog Number: 67286-1-Ig	GenBank Accession Number: BC005278	Purification Method: Protein G purification
Size: 150ul , Concentration: 2200 ug/ml by 2641 Nanodrop and 1000 ug/ml by Bradford method using BSA as the standard;	GeneID (NCBI): 2641	CloneNo.: 2A8G1
Source: Mouse	UNIPROT ID: P01275	Recommended Dilutions: IHC 1:2000-1:15000 IF-P 1:200-1:800
Isotype: IgG1	Full Name: glucagon	
Immunogen Catalog Number: AG10629	Calculated MW: 180 aa, 21 kDa	

Applications

Tested Applications: IHC, IF-P, ELISA	Positive Controls:
Cited Applications: IHC, IF	IHC : human pancreas tissue, mouse pancreas tissue
Species Specificity: Human, mouse	IF-P : mouse pancreas tissue, human pancreas tissue
Cited Species: human, mouse	
Note-IHC: suggested antigen retrieval with TE buffer pH 9.0; (*) Alternatively, antigen retrieval may be performed with citrate buffer pH 6.0	

Background Information

Glucagon is a 29-amino acid peptide hormone secreted from the pancreatic alpha cells with a powerful stimulatory effect on hepatic glucose production acting to increase plasma glucose levels. Glucagon is best known as the counter-regulatory hormone to INS, and normal glucose homeostasis depends largely on the balanced secretion of INS and glucagon from the pancreatic beta and alpha cells, respectively. The regulation of glucose metabolism by glucagon is mediated by its direct action on the peripheral tissues such as the liver and also by the brain. Glucagon is also released postprandially in a transient manner, which was shown to be involved in inhibition of food intake via reduction of meal size.

Notable Publications

Author	Pubmed ID	Journal	Application
Jingyu Fang	35498995	Food Chem X	IF
Xinghong Guo	34391847	Mol Cell Endocrinol	IF
Yunfei Luo	39719165	Life Sci	IHC

Storage

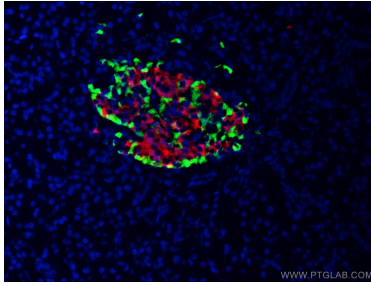
Storage:
Store at -20°C. Stable for one year after shipment.
Storage Buffer:
PBS with 0.02% sodium azide and 50% glycerol pH 7.3.
Aliquoting is unnecessary for -20°C storage

*** 20ul sizes contain 0.1% BSA

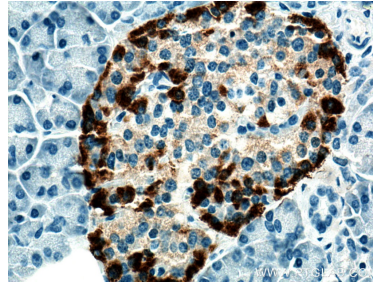
For technical support and original validation data for this product please contact:
T: 1 (888) 4PTGLAB (1-888-478-4522) (toll free in USA), or 1(312) 455-8498 (outside USA)
E: proteintech@ptglab.com
W: ptglab.com

This product is exclusively available under Proteintech Group brand and is not available to purchase from any other manufacturer.

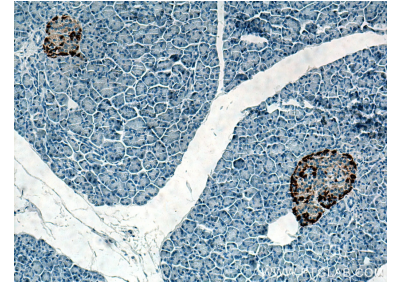
Selected Validation Data



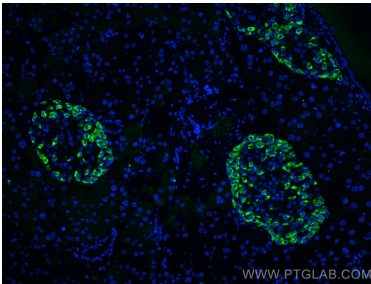
Immunofluorescent analysis of (4% PFA) fixed human pancreas tissue using 67286-1-Ig (Glucagon antibody) at dilution of 1:50 and Coralite488-Conjugated Goat Anti-Mouse IgG(H+L). The B cells of the islets of Langerhans was labelled in red with 15848-1-AP (Insulin antibody).



Immunohistochemical analysis of paraffin-embedded human pancreas tissue slide using 67286-1-Ig (Glucagon antibody) at dilution of 1:10000 (under 40x lens). Heat mediated antigen retrieval with Tris-EDTA buffer (pH 9.0).



Immunohistochemical analysis of paraffin-embedded human pancreas tissue slide using 67286-1-Ig (Glucagon antibody) at dilution of 1:10000 (under 10x lens). Heat mediated antigen retrieval with Tris-EDTA buffer (pH 9.0).



Immunofluorescent analysis of (4% PFA) fixed paraffin-embedded mouse pancreas tissue using Glucagon antibody (67286-1-Ig, Clone: 2A8G1) at dilution of 1:400 and Coralite®488-Conjugated Goat Anti-Mouse IgG(H+L) (SA00013-1). Heat mediated antigen retrieval with Tris-EDTA buffer (pH 9.0).