

For Research Use Only

WFS1 Monoclonal antibody

Catalog Number: 67291-1-Ig



Basic Information

Catalog Number: 67291-1-Ig	GenBank Accession Number: BC030130	Purification Method: Protein G purification
Size: 150ul , Concentration: 2735 ug/ml by Nanodrop and 1000 ug/ml by Bradford method using BSA as the standard;	GeneID (NCBI): 7466	CloneNo.: 4C2B5
Source: Mouse	UNIPROT ID: O76024	Recommended Dilutions: WB 1:1000-1:5000
Isotype: IgG1	Full Name: Wolfram syndrome 1 (wolframin)	
Immunogen Catalog Number: AG25735	Calculated MW: 890 aa, 100 kDa	
	Observed MW: 100 kDa	

Applications

Tested Applications: WB, ELISA	Positive Controls: WB : HeLa cells, SH-SY5Y cells, A172 cells, HT-29 cells, HEK-293 cells, C6 cells, U-251 cells, PC-12 cells, Neuro-2a cells, SW480 cells, HepG2 cells
Species Specificity: Human, mouse, rat, pig	

Background Information

Wolfram syndrome protein (WFS1), also called wolframin, is a transmembrane protein, which is located primarily in the endoplasmic reticulum and its expression is induced in response to ER stress, partially through transcriptional activation. ER localization suggests that WFS1 protein has physiological functions in membrane trafficking, secretion, processing and/or regulation of ER calcium homeostasis. It is ubiquitously expressed with highest levels in brain, pancreas, heart, and insulinoma beta-cell lines. Mutations of the WFS1 gene are responsible for two hereditary diseases, autosomal recessive Wolfram syndrome and autosomal dominant low frequency sensorineural hearing loss.

Storage

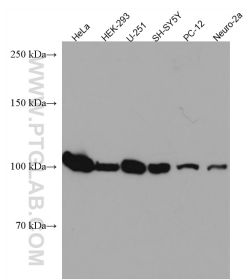
Storage:
Store at -20°C. Stable for one year after shipment.
Storage Buffer:
PBS with 0.02% sodium azide and 50% glycerol pH 7.3.
Aliquoting is unnecessary for -20°C storage

*** 20ul sizes contain 0.1% BSA

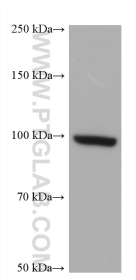
For technical support and original validation data for this product please contact:
T: 1 (888) 4PTGLAB (1-888-478-4522) (toll free in USA), or 1(312) 455-8498 (outside USA)
E: proteintech@ptglab.com
W: ptglab.com

This product is exclusively available under Proteintech Group brand and is not available to purchase from any other manufacturer.

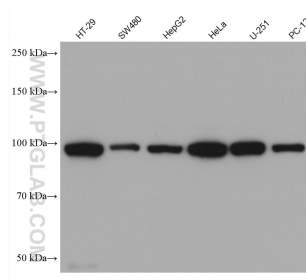
Selected Validation Data



Various lysates were subjected to SDS PAGE followed by western blot with 67291-1-Ig (WFS1 antibody) at dilution of 1:3000 incubated at room temperature for 1.5 hours.



A172 cells were subjected to SDS PAGE followed by western blot with 67291-1-Ig (WFS1 antibody) at dilution of 1:5000 incubated at room temperature for 1.5 hours.



Various lysates were subjected to SDS PAGE followed by western blot with 67291-1-Ig (WFS1 antibody) at dilution of 1:5000 incubated at room temperature for 1.5 hours.