

For Research Use Only

# PRLR Monoclonal antibody

Catalog Number: 67292-1-Ig **2 Publications**



## Basic Information

|   |  |   |
|---|--|---|
| <b>Catalog Number:</b><br>67292-1-Ig  | <b>GenBank Accession Number:</b><br>BC059392     | <b>Purification Method:</b><br>Protein G purification               |
| <b>Size:</b><br>150ul , Concentration: 2000 ug/ml by Nanodrop and 841 ug/ml by Bradford method using BSA as the standard; | <b>GeneID (NCBI):</b><br>5618                    | <b>CloneNo.:</b><br>2E10G5  |
| <b>Source:</b><br>Mouse   | <b>UNIPROT ID:</b><br>P16471                     | <b>Recommended Dilutions:</b><br>WB 1:500-1:2000<br>IHC 1:200-1:500 |
| <b>Isotype:</b><br>IgG1   | <b>Full Name:</b><br>prolactin receptor          |   |
| <b>Immunogen Catalog Number:</b><br>AG28778   | <b>Calculated MW:</b><br>622 aa, 70 kDa          |   |
|   | <b>Observed MW:</b><br>45 kDa, 70 kDa, 85-85 kDa |   |

## Applications

|  |  |
|--|--|
| <b>Tested Applications:</b><br>WB, IHC, ELISA  | <b>Positive Controls:</b><br>WB : Jurkat cells, A431 cells, T-47D cells, 4T1 cells |
| <b>Cited Applications:</b><br>WB, IHC  | <b>IHC :</b> human breast cancer tissue,   |
| <b>Species Specificity:</b><br>Human, mouse  |  |
| <b>Cited Species:</b><br>human   |  |
| <b>Note-IHC: suggested antigen retrieval with TE buffer pH 9.0; (*) Alternatively, antigen retrieval may be performed with citrate buffer pH 6.0</b> |  |

## Background Information

PRLR belongs to the cytokine type I subfamily, which also includes receptors for leptin, leukemia inhibiting factor, erythropoietin and so on. PRLR has long and short forms at approximately 70 and 45 kDa, respectively, and the mature, glycosylated form of PRLR migrates at 85-95 kDa in human decidua and placenta (PMID: 18258683).

## Notable Publications

| Author       | Pubmed ID | Journal       | Application |
|--------------|-----------|---------------|-------------|
| Wenbo Yang   | 34539753  | Front Genet   | IHC         |
| Mengjie Zhao | 35359682  | Front Vet Sci | WB          |

## Storage

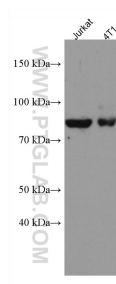
**Storage:**  
Store at -20°C. Stable for one year after shipment.  
**Storage Buffer:**  
PBS with 0.02% sodium azide and 50% glycerol pH 7.3.  
**Aliquoting is unnecessary for -20°C storage**

\*\*\* 20ul sizes contain 0.1% BSA

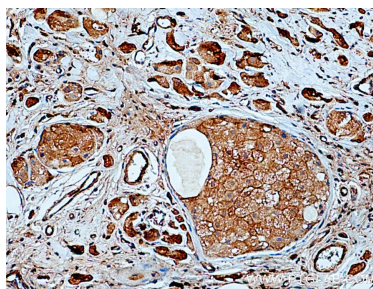
For technical support and original validation data for this product please contact:  
T: 1 (888) 4PTGLAB (1-888-478-4522) (toll free in USA), or 1(312) 455-8498 (outside USA)  
E: [proteintech@ptglab.com](mailto:proteintech@ptglab.com)  
W: [ptglab.com](http://ptglab.com)

This product is exclusively available under Proteintech Group brand and is not available to purchase from any other manufacturer.

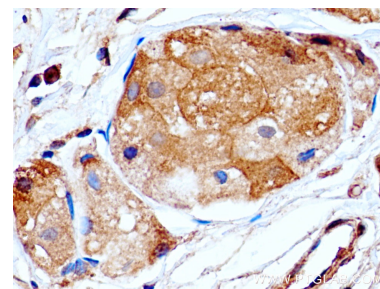
## Selected Validation Data



Various lysates were subjected to SDS PAGE followed by western blot with 67292-1-Ig (PRLR antibody) at dilution of 1:1000 incubated at room temperature for 1.5 hours.



Immunohistochemical analysis of paraffin-embedded human breast cancer tissue slide using 67292-1-Ig (PRLR antibody) at dilution of 1:200 (under 10x lens). Heat mediated antigen retrieval with Tris-EDTA buffer (pH 9.0).



Immunohistochemical analysis of paraffin-embedded human breast cancer tissue slide using 67292-1-Ig (PRLR antibody) at dilution of 1:200 (under 40x lens). Heat mediated antigen retrieval with Tris-EDTA buffer (pH 9.0).