

For Research Use Only

PRLR Monoclonal antibody, PBS Only

Catalog Number: 67292-1-PBS



Basic Information

Catalog Number: 67292-1-PBS	GenBank Accession Number: BC059392	Purification Method: Protein G purification
Size: 100ug , Concentration: 1 mg/ml by Nanodrop;	GeneID (NCBI): 5618	CloneNo.: 2E10G5
Source: Mouse	UNIPROT ID: P16471	
Isotype: IgG1	Full Name: prolactin receptor	
Immunogen Catalog Number: AG28778	Calculated MW: 622 aa, 70 kDa	
	Observed MW: 45 kDa, 70 kDa, 85-85 kDa	

Applications

Tested Applications:
WB, IHC, Indirect ELISA

Species Specificity:
Human, mouse

Background Information

PRLR belongs to the cytokine type I subfamily, which also includes receptors for leptin, leukemia inhibiting factor, erythropoietin and so on. PRLR has long and short forms at approximately 70 and 45 kDa, respectively, and the mature, glycosylated form of PRLR migrates at 85-95 kDa in human decidua and placenta (PMID: 18258683).

Storage

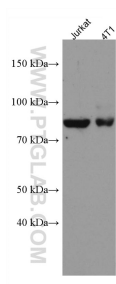
Storage:
Store at -80°C.

Storage Buffer:
PBS Only

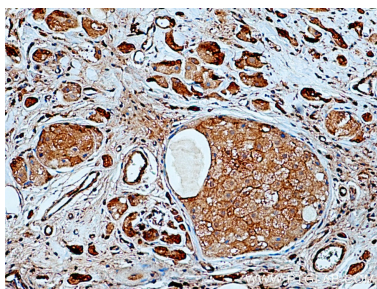
For technical support and original validation data for this product please contact:
T: 1 (888) 4PTGLAB (1-888-478-4522) (toll free in USA), or 1(312) 455-8498 (outside USA)
E: proteintech@ptglab.com
W: ptglab.com

This product is exclusively available under Proteintech Group brand and is not available to purchase from any other manufacturer.

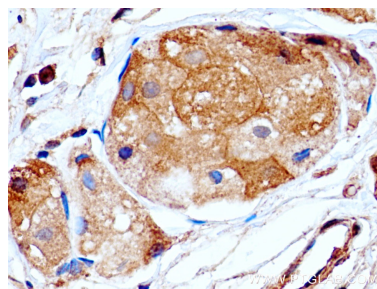
Selected Validation Data



Various lysates were subjected to SDS PAGE followed by western blot with 67292-1-Ig (PRLR antibody) at dilution of 1:1000 incubated at room temperature for 1.5 hours. This data was developed using the same antibody clone with 67292-1-PBS in a different storage buffer formulation.



Immunohistochemical analysis of paraffin-embedded human breast cancer tissue slide using 67292-1-Ig (PRLR antibody) at dilution of 1:200 (under 10x lens). Heat mediated antigen retrieval with Tris-EDTA buffer (pH 9.0). This data was developed using the same antibody clone with 67292-1-PBS in a different storage buffer formulation.



Immunohistochemical analysis of paraffin-embedded human breast cancer tissue slide using 67292-1-Ig (PRLR antibody) at dilution of 1:200 (under 40x lens). Heat mediated antigen retrieval with Tris-EDTA buffer (pH 9.0). This data was developed using the same antibody clone with 67292-1-PBS in a different storage buffer formulation.