

For Research Use Only

Luciferase Monoclonal antibody

Catalog Number: 67293-1-Ig **2 Publications**



Basic Information

Catalog Number:	GenBank Accession Number:	Purification Method:
67293-1-Ig	AY015993	Protein A purification
Size:	GeneID (NCBI):	CloneNo.:
150ul , Concentration: 1700 ug/ml by Nanodrop and 1000 ug/ml by Bradford method using BSA as the standard;	Full Name:	2D2E1
Source:	Calculated MW:	Recommended Dilutions:
Mouse	20 kDa	WB 1:5000-1:50000
Isotype:		
IgG2a		
Immunogen Catalog Number:		
AG13000		

Applications

Tested Applications:	Positive Controls:
WB, ELISA	WB : Recombinant protein, Recombinant protein
Cited Applications:	
WB	
Species Specificity:	
Gaussia princeps	
Cited Species:	
human	

Background Information

This antibody is designed to detect the luciferase of luciferase (Gaussia princeps) tagged protein.

Notable Publications

Author	Pubmed ID	Journal	Application
Yifei Zhao	34730388	J Virol	WB
Junxin Mai	35597930	BMC Biotechnol	WB

Storage

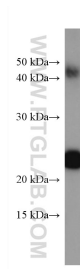
Storage:
Store at -20°C.
Storage Buffer:
PBS with 0.02% sodium azide and 50% glycerol pH 7.3.
Aliquoting is unnecessary for -20°C storage

***** 20ul sizes contain 0.1% BSA**

For technical support and original validation data for this product please contact:
T: 1 (888) 4PTGLAB (1-888-478-4522) (toll free in USA), or 1(312) 455-8498 (outside USA)
E: proteintech@ptglab.com
W: ptglab.com

This product is exclusively available under Proteintech Group brand and is not available to purchase from any other manufacturer.

Selected Validation Data



Luciferase tagged protein were subjected to SDS PAGE followed by western blot with 67293-1-Ig (Luciferase antibody) at dilution of 1:20000 incubated at room temperature for 1.5 hours.