

For Research Use Only

DOCK1 Monoclonal antibody

Catalog Number: 67296-1-Ig



Basic Information

Catalog Number: 67296-1-Ig	GenBank Accession Number: BC146857	Purification Method: Protein A purification
Size: 150ul , Concentration: 1700 ug/ml by Nanodrop and 1000 ug/ml by Bradford method using BSA as the standard;	GeneID (NCBI): 1793	CloneNo.: 1C3F12
Source: Mouse	UNIPROT ID: Q14185	Recommended Dilutions: WB 1:1000-1:6000
Isotype: IgG2a	Full Name: dedicator of cytokinesis 1	
Immunogen Catalog Number: AG18069	Calculated MW: 1865 aa, 215 kDa	
	Observed MW: 215 kDa	

Applications

Tested Applications: WB, ELISA	Positive Controls: WB : HeLa cells, HSC-T6 cells, HEK-293 cells, HepG2 cells, 4T1 cells, NIH/3T3 cells
Species Specificity: Human, mouse, rat	

Background Information

DOCK1, also named as DOCK180, belongs to the DOCK family. It is involved in cytoskeletal rearrangements required for phagocytosis of apoptotic cells and cell motility. DOCK1 functions as a guanine nucleotide exchange factor (GEF), which activates Rac Rho small GTPases by exchanging bound GDP for free GTP. Its GEF activity may be enhanced by ELMO1.

Storage

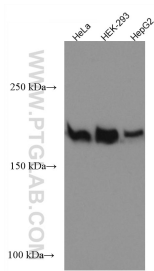
Storage:
Store at -20°C. Stable for one year after shipment.
Storage Buffer:
PBS with 0.02% sodium azide and 50% glycerol pH 7.3.
Aliquoting is unnecessary for -20°C storage

*** 20ul sizes contain 0.1% BSA

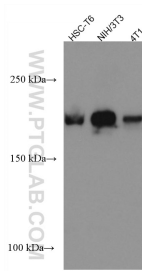
For technical support and original validation data for this product please contact:
T: 1 (888) 4PTGLAB (1-888-478-4522) (toll free in USA), or 1(312) 455-8498 (outside USA)
E: proteintech@ptglab.com
W: ptglab.com

This product is exclusively available under Proteintech Group brand and is not available to purchase from any other manufacturer.

Selected Validation Data



Various lysates were subjected to SDS PAGE followed by western blot with 67296-1-Ig (DOCK1 antibody) at dilution of 1:3000 incubated at room temperature for 1.5 hours.



Various lysates were subjected to SDS PAGE followed by western blot with 67296-1-Ig (DOCK1 antibody) at dilution of 1:3000 incubated at room temperature for 1.5 hours.