

For Research Use Only

DOCK1 Monoclonal antibody, PBS Only



Catalog Number: 67296-1-PBS

Basic Information

| | | |
|---|---|---|
| Catalog Number: 67296-1-PBS | GenBank Accession Number: BC146857 | Purification Method: Protein A purification |
| Size: 100ug , Concentration: 1 mg/ml by Nanodrop; | GeneID (NCBI): 1793 | CloneNo.: 1C3F12 |
| Source: Mouse | UNIPROT ID: Q14185 | |
| Isotype: IgG2a | Full Name: dedicator of cytokinesis 1 | |
| Immunogen Catalog Number: AG18069 | Calculated MW: 1865 aa, 215 kDa | |
| | Observed MW: 215 kDa | |

Applications

Tested Applications:
WB, Indirect ELISA

Species Specificity:
Human, mouse, rat

Background Information

DOCK1, also named as DOCK180, belongs to the DOCK family. It is involved in cytoskeletal rearrangements required for phagocytosis of apoptotic cells and cell motility. DOCK1 functions as a guanine nucleotide exchange factor (GEF), which activates Rac/Rho small GTPases by exchanging bound GDP for free GTP. Its GEF activity may be enhanced by ELMO1.

Storage

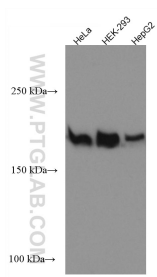
Storage:
Store at -80°C.

Storage Buffer:
PBS Only

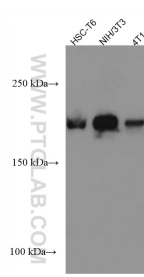
For technical support and original validation data for this product please contact:
T: 1 (888) 4PTGLAB (1-888-478-4522) (toll free in USA), or 1(312) 455-8498 (outside USA)
E: proteintech@ptglab.com
W: ptglab.com

This product is exclusively available under Proteintech Group brand and is not available to purchase from any other manufacturer.

Selected Validation Data



Various lysates were subjected to SDS PAGE followed by western blot with 67296-1-Ig (DOCK1 antibody) at dilution of 1:3000 incubated at room temperature for 1.5 hours. This data was developed using the same antibody clone with 67296-1-PBS in a different storage buffer formulation.



Various lysates were subjected to SDS PAGE followed by western blot with 67296-1-Ig (DOCK1 antibody) at dilution of 1:3000 incubated at room temperature for 1.5 hours. This data was developed using the same antibody clone with 67296-1-PBS in a different storage buffer formulation.