

For Research Use Only

# KLF6 Monoclonal antibody

Catalog Number: 67297-1-Ig **3 Publications**



## Basic Information

<b>Catalog Number:</b> 67297-1-Ig	<b>GenBank Accession Number:</b> BC000311	<b>Purification Method:</b> Protein A purification
<b>Size:</b> 150ul, Concentration: 1800 ug/ml by Nanodrop and 1000 ug/ml by Bradford method using BSA as the standard;	<b>GeneID (NCBI):</b> 1316	<b>CloneNo.:</b> 2F8B3
<b>Source:</b> Mouse	<b>UNIPROT ID:</b> Q99612	<b>Recommended Dilutions:</b> WB 1:1000-1:6000
<b>Isotype:</b> IgG1	<b>Full Name:</b> Kruppel-like factor 6	
<b>Immunogen Catalog Number:</b> AG6859	<b>Calculated MW:</b> 32 kDa	
	<b>Observed MW:</b> 32-42 kDa	

## Applications

<b>Tested Applications:</b> WB, ELISA	<b>Positive Controls:</b> WB : JAR cells, NCCIT cells, L02 cells, Jurkat cells, K-562 cells
<b>Cited Applications:</b> WB	
<b>Species Specificity:</b> human, mouse	
<b>Cited Species:</b> human, mouse	

## Background Information

KLF6(krupple-like factor 6) is a zinc finger transcription factor and tumor suppressor with biological activities and transcriptional targets in growing range. It is highly expressed in placenta followed by spleen, thymus, prostate, testis, small intestine and colon. One key target gene of KLF6 in endoglin, which is a homodimeric cell membrane glycoprotein and TGF- $\beta$  auxiliary receptor, owns a pro-angiogenic role in endothelial cells and is also involved in malignant progression. Also KLF6 induces apoptosis in prostate cancer cells through upregulation of ATF3. KLF6 was normal detected as a 46kDa protein, which is larger than translation product(32kDa), because of post-translational modification including both phosphorylation and glycosylation. This antibody raise against the full length of KLF6 gene of human origin, and can recognize both of KLF6, included KLF6(~32kDa), p-KLF6(~35-46kDa). Otherwise, there may be a non-specific band(50kDa) showed in detection

## Notable Publications

Author	Pubmed ID	Journal	Application
Yun Liu	32998707	BMC Mol Cell Biol	WB
Nan Li	38851422	Life Sci	WB
Xiaoyan Chen	37295703	Cell Signal	WB

## Storage

**Storage:**  
Store at -20°C. Stable for one year after shipment.  
**Storage Buffer:**  
PBS with 0.02% sodium azide and 50% glycerol pH 7.3.  
**Aliquoting is unnecessary for -20°C storage**

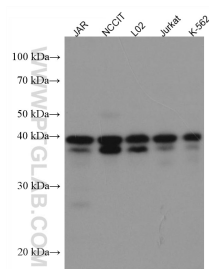
\*\*\* 20ul sizes contain 0.1% BSA

For technical support and original validation data for this product please contact:  
T: 1 (888) 4PTGLAB (1-888-478-4522) (toll free in USA), or 1(312) 455-8498 (outside USA)  
E: proteintech@ptglab.com  
W: ptglab.com

This product is exclusively available under Proteintech Group brand and is not available to purchase from any other manufacturer.



## Selected Validation Data



Various lysates were subjected to SDS PAGE followed by western blot with 67297-1-Ig (KLF6 antibody) at dilution of 1:3000 incubated at room temperature for 1.5 hours.