

For Research Use Only

KLF6 Monoclonal antibody

Catalog Number: 67297-1-Ig **2 Publications**



Basic Information

Catalog Number: 67297-1-Ig	GenBank Accession Number: BC000311	Purification Method: Protein A purification
Size: 150ul , Concentration: 1800 µg/ml by Nanodrop and 1000 µg/ml by Bradford method using BSA as the standard;	GeneID (NCBI): 1316	CloneNo.: 2F8B3
Source: Mouse	Full Name: Kruppel-like factor 6	Recommended Dilutions: WB 1:1000-1:6000
Isotype: IgG1	Calculated MW: 32 kDa	
Immunogen Catalog Number: AG6859	Observed MW: 32-42 kDa	

Applications

Tested Applications: WB, ELISA	Positive Controls: WB : JAR cells, NCCIT cells, L02 cells, Jurkat cells, K-562 cells
Cited Applications: WB	
Species Specificity: Human, mouse	
Cited Species: human, mouse	

Background Information

KLF6(krupple-like factor 6) is a zinc finger transcription factor and tumor suppressor with biological activities and transcriptional targets in growing range. It is highly expressed in placenta followed by spleen, thymus, prostate, testis, small intestine and colon. One key target gene of KLF6 in endoglin, which is a homodimeric cell membrane glycoprotein and TGF-β auxiliary receptor, owns a pro-angiogenic role in endothelial cells and is also involved in malignant progression. Also KLF6 induces apoptosis in prostate cancer cells through upregulation of ATF3. KLF6 was normal detected as a 46kDa protein, which is larger than translation product(32kDa), because of post-translational modification including both phosphorylation and glycosylation. This antibody raise against the full length of KLF6 gene of human origin, and can recognize both of KLF6, included KLF6(~32kDa), p-KLF6(~35-46kDa). Otherwise, there may be a non-specific band(50kDa) showed in detection

Notable Publications

Author	Pubmed ID	Journal	Application
Yun Liu	32998707	BMC Mol Cell Biol	WB
Xiaoyan Chen	37295703	Cell Signal	WB

Storage

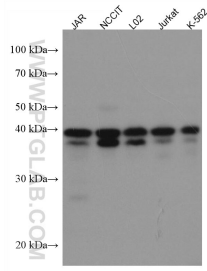
Storage:
Store at -20°C. Stable for one year after shipment.
Storage Buffer:
PBS with 0.02% sodium azide and 50% glycerol pH 7.3.
Aliquoting is unnecessary for -20°C storage

*** 20ul sizes contain 0.1% BSA

For technical support and original validation data for this product please contact:
T: 1 (888) 4PTGLAB (1-888-478-4522) (toll free in USA), or 1(312) 455-8498 (outside USA)
E: proteintech@ptglab.com
W: ptglab.com

This product is exclusively available under Proteintech Group brand and is not available to purchase from any other manufacturer.

Selected Validation Data



Various lysates were subjected to SDS PAGE followed by western blot with 67297-1-Ig (KLF6 antibody) at dilution of 1:3000 incubated at room temperature for 1.5 hours.