

For Research Use Only

CSE1L Monoclonal antibody

Catalog Number: 67306-1-Ig



Basic Information

Catalog Number: 67306-1-Ig	GenBank Accession Number: BC109313	Purification Method: Protein A purification
Size: 150ul , Concentration: 2000 ug/ml by Nanodrop and 1000 ug/ml by Bradford method using BSA as the standard;	GeneID (NCBI): 1434	CloneNo.: 1G1A11
Source: Mouse	UNIPROT ID: P55060	Recommended Dilutions: WB 1:5000-1:50000 IHC 1:500-1:2000 IF-P 1:200-1:800
Isotype: IgG2a	Full Name: CSE1 chromosome segregation 1-like (yeast)	
Immunogen Catalog Number: AG29131	Calculated MW: 971 aa, 110 kDa	
	Observed MW: 100 kDa	

Applications

Tested Applications:

WB, IHC, IF-P, ELISA

Species Specificity:

Human, mouse, rat

**Note-IHC: suggested antigen retrieval with
TE buffer pH 9.0; (*) Alternatively, antigen
retrieval may be performed with citrate
buffer pH 6.0**

Positive Controls:

WB : HeLa cells, HSC-T6 cells, 4T1 cells, NIH/3T3 cells,
Jurkat cells, HepG2 cells, HEK-293 cells

IHC : human colon cancer tissue,

IF-P : human colon cancer tissue,

Storage

Storage:

Store at -20°C. Stable for one year after shipment.

Storage Buffer:

PBS with 0.02% sodium azide and 50% glycerol pH 7.3.

Aliquoting is unnecessary for -20°C storage

*** 20ul sizes contain 0.1% BSA

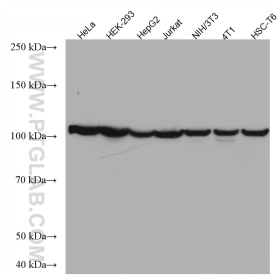
For technical support and original validation data for this product please contact:

T: 1 (888) 4PTGLAB (1-888-478-4522) (toll free
in USA), or 1(312) 455-8498 (outside USA)

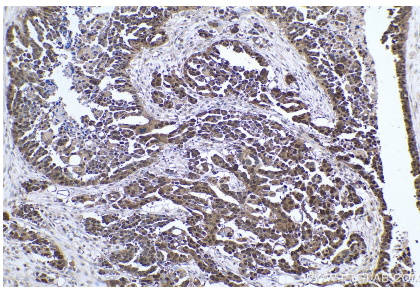
E: proteintech@ptglab.com
W: ptglab.com

This product is exclusively available under Proteintech
Group brand and is not available to purchase from any
other manufacturer.

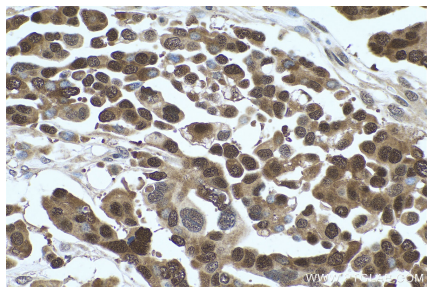
Selected Validation Data



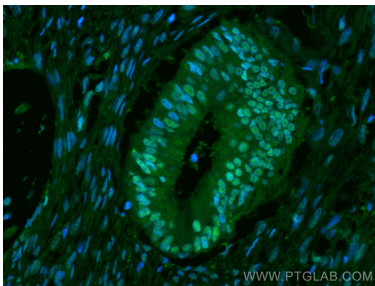
Various lysates were subjected to SDS PAGE followed by western blot with 67306-1-Ig (CSE1L antibody) at dilution of 1:10000 incubated at room temperature for 1.5 hours.



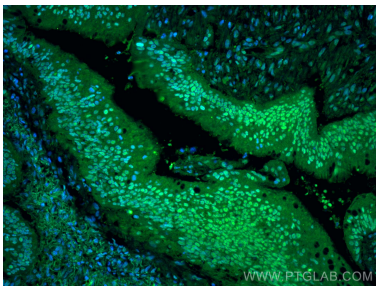
Immunohistochemical analysis of paraffin-embedded human colon cancer tissue slide using 67306-1-Ig (CSE1L antibody) at dilution of 1:1000 (under 10x lens). Heat mediated antigen retrieval with Tris-EDTA buffer (pH 9.0).



Immunohistochemical analysis of paraffin-embedded human colon cancer tissue slide using 67306-1-Ig (CSE1L antibody) at dilution of 1:1000 (under 40x lens). Heat mediated antigen retrieval with Tris-EDTA buffer (pH 9.0).



Immunofluorescent analysis of (4% PFA) fixed human colon cancer tissue using CSE1L antibody (67306-1-Ig, Clone: 1G1A11) at dilution of 1:400 and CoraLite®488-Conjugated AffiniPure Goat Anti-Mouse IgG(H+L).



Immunofluorescent analysis of (4% PFA) fixed human colon cancer tissue using CSE1L antibody (67306-1-Ig, Clone: 1G1A11) at dilution of 1:400 and CoraLite®488-Conjugated AffiniPure Goat Anti-Mouse IgG(H+L).