

For Research Use Only

# CSE1L Monoclonal antibody

Catalog Number: 67306-1-Ig



## Basic Information

<b>Catalog Number:</b> 67306-1-Ig	<b>GenBank Accession Number:</b> BC109313	<b>Purification Method:</b> Protein A purification
<b>Size:</b> 150ul , Concentration: 2000 µg/ml by Nanodrop and 1000 µg/ml by Bradford method using BSA as the standard;	<b>GeneID (NCBI):</b> 1434	<b>CloneNo.:</b> 1G1A11
<b>Source:</b> Mouse	<b>Full Name:</b> CSE1 chromosome segregation 1-Like (yeast)	<b>Recommended Dilutions:</b> WB 1:5000-1:50000 IHC 1:500-1:2000 IF 1:200-1:800
<b>Isotype:</b> IgG2a	<b>Calculated MW:</b> 971 aa, 110 kDa	
<b>Immunogen Catalog Number:</b> AG29131	<b>Observed MW:</b> 100 kDa	

## Applications

### Tested Applications:

IF, IHC, WB, ELISA

### Species Specificity:

Human, mouse, rat

**Note-IHC: suggested antigen retrieval with  
TE buffer pH 9.0; (\*) Alternatively, antigen  
retrieval may be performed with citrate  
buffer pH 6.0**

### Positive Controls:

WB : HeLa cells, HSC-T6 cells, 4T1 cells, NIH/3T3 cells,  
Jurkat cells, HepG2 cells, HEK-293 cells

IHC : human colon cancer tissue,

IF : human colon cancer tissue,

## Background Information

### Storage

#### Storage:

Store at -20°C. Stable for one year after shipment.

#### Storage Buffer:

PBS with 0.02% sodium azide and 50% glycerol pH 7.3.

Aliquoting is unnecessary for -20°C storage

\*\*\* 20ul sizes contain 0.1% BSA

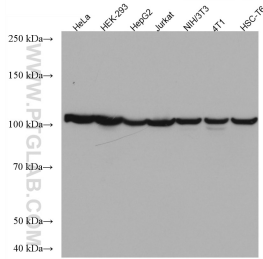
For technical support and original validation data for this product please contact:

T: 1 (888) 4PTGLAB (1-888-478-4522) (toll free  
in USA), or 1(312) 455-8498 (outside USA)

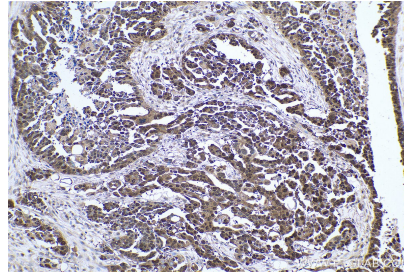
E: proteintech@ptglab.com  
W: ptglab.com

This product is exclusively available under Proteintech  
Group brand and is not available to purchase from any  
other manufacturer.

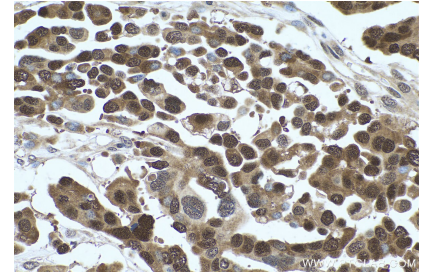
## Selected Validation Data



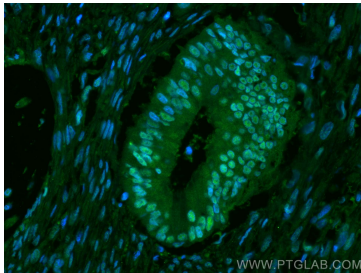
Various lysates were subjected to SDS PAGE followed by western blot with 67306-1-Ig (CSE1L antibody) at dilution of 1:10000 incubated at room temperature for 1.5 hours.



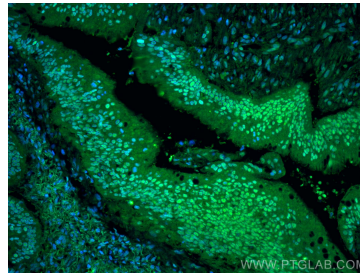
Immunohistochemical analysis of paraffin-embedded human colon cancer tissue slide using 67306-1-Ig (CSE1L antibody) at dilution of 1:1000 (under 10x lens). Heat mediated antigen retrieval with Tris-EDTA buffer (pH 9.0).



Immunohistochemical analysis of paraffin-embedded human colon cancer tissue slide using 67306-1-Ig (CSE1L antibody) at dilution of 1:1000 (under 40x lens). Heat mediated antigen retrieval with Tris-EDTA buffer (pH 9.0).



Immunofluorescent analysis of (4% PFA) fixed human colon cancer tissue using CSE1L antibody (67306-1-Ig, Clone: 1G1A11) at dilution of 1:400 and CoraLite®488-Conjugated AffiniPure Goat Anti-Mouse IgG(H+L).



Immunofluorescent analysis of (4% PFA) fixed human colon cancer tissue using CSE1L antibody (67306-1-Ig, Clone: 1G1A11) at dilution of 1:400 and CoraLite®488-Conjugated AffiniPure Goat Anti-Mouse IgG(H+L).