

For Research Use Only

CSE1L Monoclonal antibody, PBS Only



Catalog Number: 67306-1-PBS

Basic Information

Catalog Number:

67306-1-PBS

Size:

100ug, Concentration: 1 mg/ml by Nanodrop;

Source:

Mouse

Isotype:

IgG2a

Immunogen Catalog Number:

AG29131

GenBank Accession Number:

BC109313

GeneID (NCBI):

1434

UNIPROT ID:

P55060

Full Name:

CSE1 chromosome segregation 1-like (yeast)

Calculated MW:

971 aa, 110 kDa

Observed MW:

100 kDa

Purification Method:

Protein A purification

CloneNo.:

1G1A11

Applications

Tested Applications:

WB, IF, IHC, Indirect ELISA

Species Specificity:

Human, mouse, rat

Storage

Storage:

Store at -80°C.

Storage Buffer:

PBS Only

For technical support and original validation data for this product please contact:

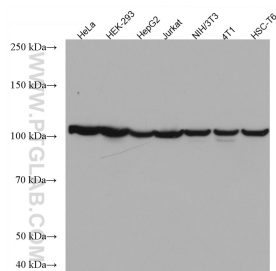
T: 1 (888) 4PTGLAB (1-888-478-4522) (toll free in USA), or 1(312) 455-8498 (outside USA)

E: proteintech@ptglab.com

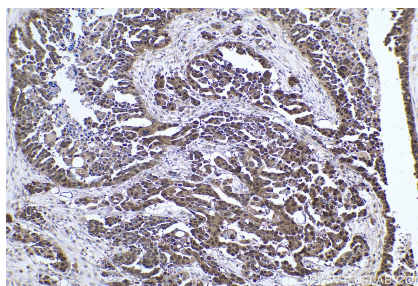
W: ptglab.com

This product is exclusively available under Proteintech Group brand and is not available to purchase from any other manufacturer.

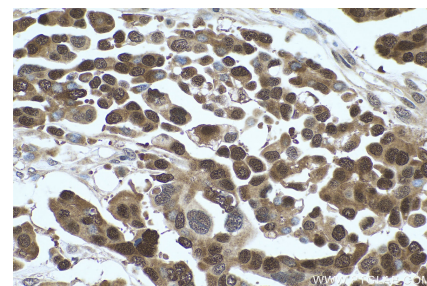
Selected Validation Data



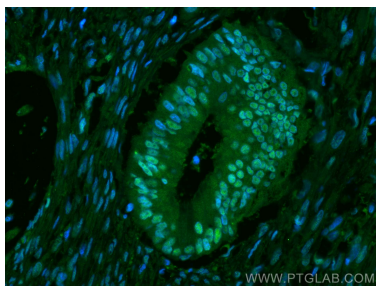
Various lysates were subjected to SDS PAGE followed by western blot with 67306-1-Ig (CSE1L antibody) at dilution of 1:10000 incubated at room temperature for 1.5 hours. This data was developed using the same antibody clone with 67306-1-PBS in a different storage buffer formulation.



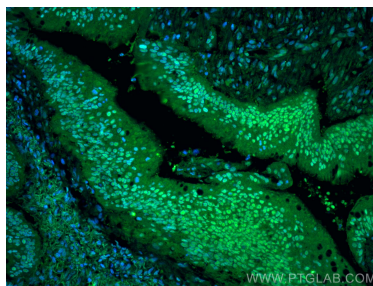
Immunohistochemical analysis of paraffin-embedded human colon cancer tissue slide using 67306-1-Ig (CSE1L antibody) at dilution of 1:1000 (under 10x lens). Heat mediated antigen retrieval with Tris-EDTA buffer (pH 9.0). This data was developed using the same antibody clone with 67306-1-PBS in a different storage buffer formulation.



Immunohistochemical analysis of paraffin-embedded human colon cancer tissue slide using 67306-1-Ig (CSE1L antibody) at dilution of 1:1000 (under 40x lens). Heat mediated antigen retrieval with Tris-EDTA buffer (pH 9.0). This data was developed using the same antibody clone with 67306-1-PBS in a different storage buffer formulation.



Immunofluorescent analysis of (4% PFA) fixed human colon cancer tissue using CSE1L antibody (67306-1-Ig, Clone: 1G1A11) at dilution of 1:400 and CoraLite®488-Conjugated AffiniPure Goat Anti-Mouse IgG(H+L). This data was developed using the same antibody clone with 67306-1-PBS in a different storage buffer formulation.



Immunofluorescent analysis of (4% PFA) fixed human colon cancer tissue using CSE1L antibody (67306-1-Ig, Clone: 1G1A11) at dilution of 1:400 and CoraLite®488-Conjugated AffiniPure Goat Anti-Mouse IgG(H+L). This data was developed using the same antibody clone with 67306-1-PBS in a different storage buffer formulation.