

For Research Use Only

# Alpha 2-Antiplasmin Monoclonal antibody

Catalog Number: 67308-1-Ig



## Basic Information

<b>Catalog Number:</b> 67308-1-Ig	<b>GenBank Accession Number:</b> BC031592	<b>Purification Method:</b> Protein G purification
<b>Size:</b> 150ul , Concentration: 1802 ug/ml by Nanodrop and 1000 ug/ml by Bradford method using BSA as the standard;	<b>GeneID (NCBI):</b> 5345	<b>CloneNo.:</b> 3F6C3
<b>Source:</b> Mouse	<b>UNIPROT ID:</b> P08697	<b>Recommended Dilutions:</b> WB 1:5000-1:20000 IHC 1:50-1:500 IF/ICC 1:50-1:500
<b>Isotype:</b> IgG1	<b>Full Name:</b> serpin peptidase inhibitor, clade F (alpha-2 antiplasmin, pigment epithelium derived factor), member 2	
<b>Immunogen Catalog Number:</b> AG4095	<b>Calculated MW:</b> 491 aa, 55 kDa	
	<b>Observed MW:</b> 55 kDa	

## Applications

<b>Tested Applications:</b> WB, IHC, IF/ICC, ELISA	<b>Positive Controls:</b>
<b>Species Specificity:</b> Human	<b>WB :</b> HepG2 cells, human plasma, THP-1 cells, K-562 cells, HuH-7 cells
<b>Note-IHC: suggested antigen retrieval with TE buffer pH 9.0; (*) Alternatively, antigen retrieval may be performed with citrate buffer pH 6.0</b>	<b>IHC :</b> human liver tissue,
	<b>IF/ICC :</b> HepG2 cells,

## Storage

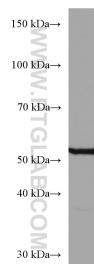
**Storage:**  
Store at -20°C.  
**Storage Buffer:**  
PBS with 0.02% sodium azide and 50% glycerol pH 7.3.  
Aliquoting is unnecessary for -20°C storage

\*\*\* 20ul sizes contain 0.1% BSA

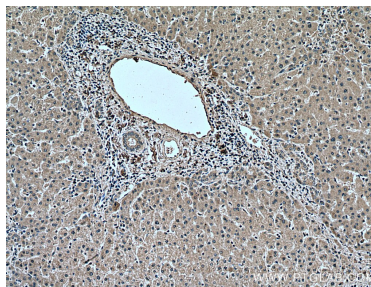
For technical support and original validation data for this product please contact:  
T: 1 (888) 4PTGLAB (1-888-478-4522) (toll free in USA), or 1(312) 455-8498 (outside USA)  
E: [proteintech@ptglab.com](mailto:proteintech@ptglab.com)  
W: [ptglab.com](http://ptglab.com)

This product is exclusively available under Proteintech Group brand and is not available to purchase from any other manufacturer.

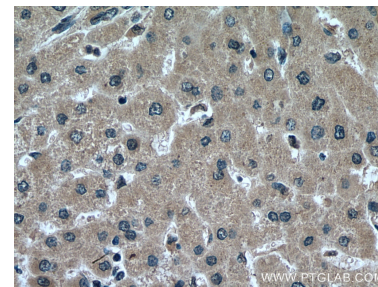
## Selected Validation Data



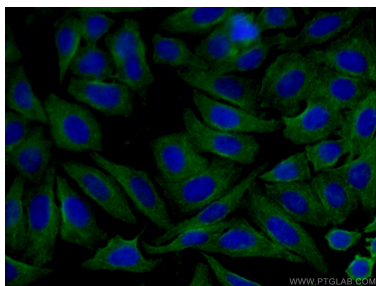
HepG2 cells were subjected to SDS PAGE followed by western blot with 67308-1-Ig (Alpha-2-antiplasmin antibody) at dilution of 1:20000 incubated at room temperature for 1.5 hours.



Immunohistochemical analysis of paraffin-embedded human liver tissue slide using 67308-1-Ig (Alpha-2-antiplasmin antibody) at dilution of 1:200 (under 10x lens). Heat mediated antigen retrieval with Tris-EDTA buffer (pH 9.0).



Immunohistochemical analysis of paraffin-embedded human liver tissue slide using 67308-1-Ig (Alpha-2-antiplasmin antibody) at dilution of 1:200 (under 40x lens). Heat mediated antigen retrieval with Tris-EDTA buffer (pH 9.0).



Immunofluorescent analysis of (-20°C Ethanol) fixed HepG2 cells using 67308-1-Ig (Alpha-2-antiplasmin antibody) at dilution of 1:100 and CoraLite488-Conjugated Goat Anti-Mouse IgG(H+L).