

For Research Use Only

# DCPS Monoclonal antibody

Catalog Number: 67311-1-Ig



## Basic Information

<b>Catalog Number:</b> 67311-1-Ig	<b>GenBank Accession Number:</b> BC014532	<b>Purification Method:</b> Protein A purification
<b>Size:</b> 150ul , Concentration: 1600 ug/ml by Nanodrop and 1000 ug/ml by Bradford method using BSA as the standard;	<b>GeneID (NCBI):</b> 28960	<b>CloneNo.:</b> 1B2E4
<b>Source:</b> Mouse	<b>UNIPROT ID:</b> Q96C86	<b>Recommended Dilutions:</b> WB 1:1000-1:6000 IHC 1:250-1:1000 IF-P 1:200-1:800
<b>Isotype:</b> IgG2b	<b>Full Name:</b> decapping enzyme, scavenger	
<b>Immunogen Catalog Number:</b> AG8872	<b>Calculated MW:</b> 337 aa, 39 kDa	
	<b>Observed MW:</b> 35-40 kDa	

## Applications

<b>Tested Applications:</b> WB, IHC, IF-P, ELISA	<b>Positive Controls:</b>
<b>Species Specificity:</b> Human, Mouse, Rat	<b>WB :</b> HeLa cells, rat spleen tissue, mouse brain tissue, HepG2 cells, K-562 cells, Jurkat cells
<b>Note-IHC: suggested antigen retrieval with TE buffer pH 9.0; (*) Alternatively, antigen retrieval may be performed with citrate buffer pH 6.0</b>	<b>IHC :</b> human breast cancer tissue,
	<b>IF-P :</b> human liver cancer tissue,

## Background Information

DcpS, which is a member of the histidine triad (HIT) superfamily of pyrophosphatases, is the first HIT protein with a defined biological function and identifies the HIT motif as a new mRNA decapping domain. DcpS can encode a 38-40 kDa protein, and has the potential to form a homodimer of 80 kDa (PMID: 12198172).

## Storage

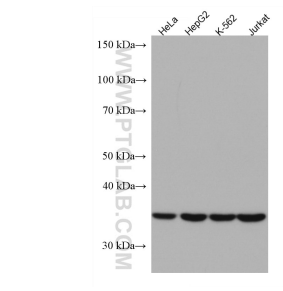
**Storage:**  
Store at -20°C. Stable for one year after shipment.  
**Storage Buffer:**  
PBS with 0.02% sodium azide and 50% glycerol pH 7.3.  
Aliquoting is unnecessary for -20°C storage

\*\*\* 20ul sizes contain 0.1% BSA

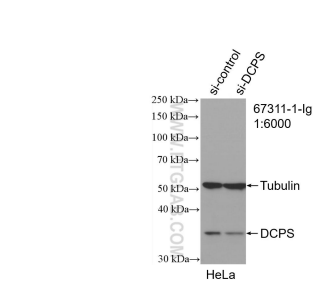
For technical support and original validation data for this product please contact:  
T: 1 (888) 4PTGLAB (1-888-478-4522) (toll free in USA), or 1(312) 455-8498 (outside USA)  
E: proteintech@ptglab.com  
W: ptglab.com

This product is exclusively available under Proteintech Group brand and is not available to purchase from any other manufacturer.

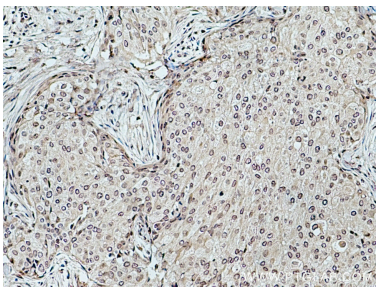
Selected Validation Data



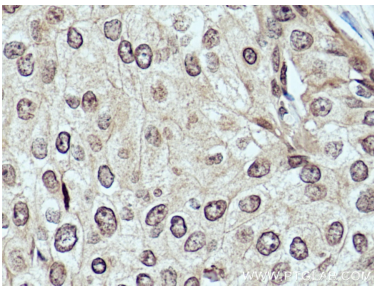
Various lysates were subjected to SDS PAGE followed by western blot with 67311-1-Ig (DCPS antibody) at dilution of 1:3000 incubated at room temperature for 1.5 hours.



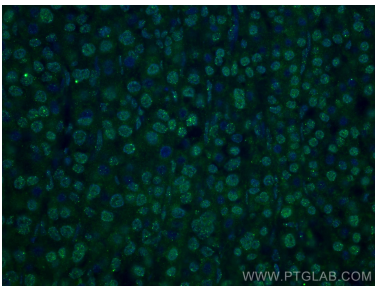
WB result of DCPS antibody (67311-1-Ig: 1:6000; incubated at room temperature for 1.5 hours) with sh-Control and sh-DCPS transfected HeLa cells.



Immunohistochemical analysis of paraffin-embedded human breast cancer tissue slide using 67311-1-Ig (DCPS antibody) at dilution of 1:500 (under 10x lens). Heat mediated antigen retrieval with Tris-EDTA buffer (pH 9.0).



Immunohistochemical analysis of paraffin-embedded human breast cancer tissue slide using 67311-1-Ig (DCPS antibody) at dilution of 1:500 (under 40x lens). Heat mediated antigen retrieval with Tris-EDTA buffer (pH 9.0).



Immunofluorescent analysis of (4% PFA) fixed human liver cancer tissue using DCPS antibody (67311-1-Ig, Clone: 1B2E4 ) at dilution of 1:400 and CoraLite® 488-Conjugated Goat Anti-Mouse IgG(H+L).