

For Research Use Only

# DCPS Monoclonal antibody

Catalog Number: 67311-1-Ig



## Basic Information

<b>Catalog Number:</b> 67311-1-Ig	<b>GenBank Accession Number:</b> BC014532	<b>Purification Method:</b> Protein A purification
<b>Size:</b> 150ul , Concentration: 1600 µg/ml by Nanodrop and 1000 µg/ml by Bradford method using BSA as the standard;	<b>GeneID (NCBI):</b> 28960	<b>CloneNo.:</b> 1B2E4
<b>Source:</b> Mouse	<b>Full Name:</b> decapping enzyme, scavenger	<b>Recommended Dilutions:</b> WB 1:1000-1:6000 IHC 1:250-1:1000 IF 1:200-1:800
<b>Isotype:</b> IgG2b	<b>Calculated MW:</b> 337 aa, 39 kDa	
<b>Immunogen Catalog Number:</b> AG8872	<b>Observed MW:</b> 35-40 kDa	

## Applications

### Tested Applications:

IF, IHC, WB, ELISA

### Species Specificity:

Human

**Note-IHC: suggested antigen retrieval with TE buffer pH 9.0; (\*) Alternatively, antigen retrieval may be performed with citrate buffer pH 6.0**

### Positive Controls:

WB : HeLa cells, rat spleen tissue, mouse brain tissue, HepG2 cells, K-562 cells, Jurkat cells

IHC : human breast cancer tissue,

IF : human liver cancer tissue,

## Background Information

DcpS, which is a member of the histidine triad (HIT) superfamily of pyrophosphatases, is the first HIT protein with a defined biological function and identifies the HIT motif as a new mRNA decapping domain. DcpS can encode a 38-40 kDa protein, and has the potential to form a homodimer of 80 kDa (PMID: 12198172).

## Storage

### Storage:

Store at -20°C.

### Storage Buffer:

PBS with 0.02% sodium azide and 50% glycerol pH 7.3.

Aliquoting is unnecessary for -20°C storage

\*\*\* 20ul sizes contain 0.1% BSA

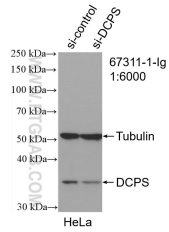
For technical support and original validation data for this product please contact:

T: 1 (888) 4PTGLAB (1-888-478-4522) (toll free in USA), or 1(312) 455-8498 (outside USA)

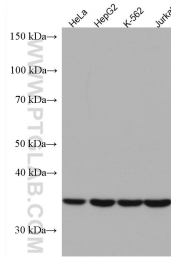
E: proteintech@ptglab.com  
W: ptglab.com

This product is exclusively available under Proteintech Group brand and is not available to purchase from any other manufacturer.

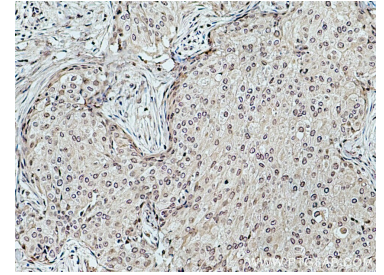
## Selected Validation Data



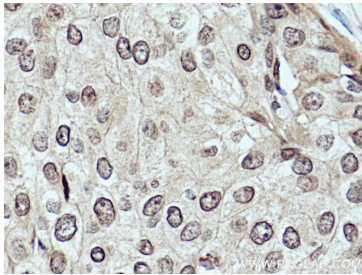
WB result of DCPS antibody (67311-1-Ig; 1:6000; incubated at room temperature for 1.5 hours) with sh-Control and sh-DCPS transfected HeLa cells.



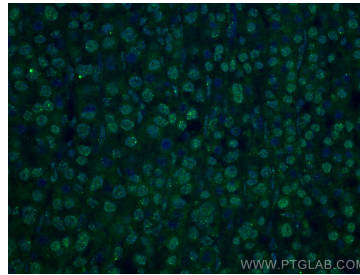
Various lysates were subjected to SDS PAGE followed by western blot with 67311-1-Ig (DCPS antibody) at dilution of 1:3000 incubated at room temperature for 1.5 hours.



Immunohistochemical analysis of paraffin-embedded human breast cancer tissue slide using 67311-1-Ig (DCPS antibody) at dilution of 1:500 (under 10x lens). Heat mediated antigen retrieval with Tris-EDTA buffer (pH 9.0).



Immunohistochemical analysis of paraffin-embedded human breast cancer tissue slide using 67311-1-Ig (DCPS antibody) at dilution of 1:500 (under 40x lens). Heat mediated antigen retrieval with Tris-EDTA buffer (pH 9.0).



Immunofluorescent analysis of (4% PFA) fixed human liver cancer tissue using DCPS antibody (67311-1-Ig, Clone: 1B2E4) at dilution of 1:400 and CoraLite® 488-Conjugated AffiniPure Goat Anti-Mouse IgG(H+L).