

For Research Use Only

MTMR2 Monoclonal antibody

Catalog Number: 67312-1-Ig **Featured Product**



Basic Information

Catalog Number: 67312-1-Ig	GenBank Accession Number: BC052990	Purification Method: Protein A purification
Size: 150ul , Concentration: 1700 µg/ml by Nanodrop and 1000 µg/ml by Bradford method using BSA as the standard;	GeneID (NCBI): 8898	CloneNo.: 1B11B7
Source: Mouse	Full Name: myotubularin related protein 2	Recommended Dilutions: WB 1:1000-1:6000
Isotype: IgG2b	Calculated MW: 73 kDa	
Immunogen Catalog Number: AG28413	Observed MW: 66-73 kDa	

Applications

Tested Applications: WB, ELISA	Positive Controls: WB : HeLa cells, pig brain tissue, HEK-293 cells, Jurkat cells
Species Specificity: Human, Pig	

Background Information

MTMR2(myotubularin-related protein 2) is also named as KIAA1073 and belongs to the non-receptor class myotubularin subfamily, which is characterized by the presence of a phosphatase domain. It may regulate vesicular trafficking in Schwann cells (PMID:17880751) and its reversible phosphorylation represents a critical mechanism for regulating the subcellular localization of MTMR2(PMID:21372139). MTMR2 is a 73 kDa protein in its monomeric form and exist as a dimer within cells and the protein re-localizes to membranes in hypo-osmotic settings(PMID:16399794). Defects in MTMR2 are the cause of Charcot-Marie-Tooth disease type 4B1 (CMT4B1). MTMR2 has two isoforms with the molecular mass of 73 and 66 kDa.

Storage

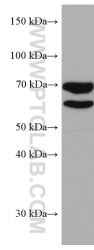
Storage:
Store at -20°C. Stable for one year after shipment.
Storage Buffer:
PBS with 0.02% sodium azide and 50% glycerol pH 7.3.
Aliquoting is unnecessary for -20°C storage

*** 20ul sizes contain 0.1% BSA

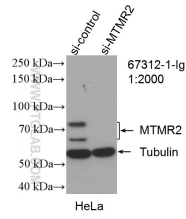
For technical support and original validation data for this product please contact:
T: 1 (888) 4PTGLAB (1-888-478-4522) (toll free in USA), or 1(312) 455-8498 (outside USA)
E: proteintech@ptglab.com
W: ptglab.com

This product is exclusively available under Proteintech Group brand and is not available to purchase from any other manufacturer.

Selected Validation Data



HeLa cells were subjected to SDS PAGE followed by western blot with 67312-1-Ig (MTMR2 antibody) at dilution of 1:3000 incubated at room temperature for 1.5 hours.



WB result of MTMR2 antibody (67312-1-Ig; 1:2000; incubated at room temperature for 1.5 hours) with sh-Control and sh-MTMR2 transfected HeLa cells.